

FIRST-CLASS MAIL  
PRESORTED  
U.S. POSTAGE PAID  
SACRAMENTO, CA  
PERMIT #328360

**BCHC**  
**BACKCOUNTRY HORSEMEN**  
**OF CALIFORNIA**  
13061 Rosedale Hwy  
Suite G, Box 217  
Bakersfield, CA 93314  
ADDRESS SERVICE  
REQUESTED

# The Backcountry News

Volume 34, Issue 1      The Official Publication of Backcountry Horsemen of California      WINTER 2022



## NEW LEADERS ELECTED

**2nd Vice President**  
**ALYSSA ALVAREZ**  
(Redwood Unit)



**President**  
**MIKE HUGHES**  
(Kern River Valley Unit)

**National Director**  
**ROBERT ANDERSON**  
(Kern Sierra Unit)



See page 5 for more information

# The Backcountry News

An internal publication of the Backcountry Horsemen of California

Editor Carol Jo Hargreaves

BCHCNewsletter@gmail.com

BCHC Official Website: [www.bchcalifornia.org](http://www.bchcalifornia.org)

Printed by The Manteca Bulletin

**Publication Information:** The Backcountry News is the official journal of the Backcountry Horsemen of California, Inc., published four times per year. All rights reserved. It is an independent publication with news and information of interest to Backcountry Horsemen members, with an average circulation of approximately 2,000 per issue. Annual subscriptions are \$15 for non-members. Nonprofit postage paid at Manteca, CA.

**Who is BCHC?** The Backcountry Horsemen of California, Inc. is a 501c3 nonprofit organization incorporated in the State of California, March 13, 1990, with a 501(c)4 education foundation established in 2007. The Backcountry Horsemen of California, Inc., reserves the right to refuse any articles and/or advertisements that are not consistent with the Backcountry Horsemen of California's Objectives and Purpose statement. Other material will be printed at the Editor's discretion.

**Disclaimer:** Articles and advertisements that appear in The Backcountry News do not necessarily reflect the position or opinion of BCHC or its officers and members. Nor does publication of said articles and advertisements constitute endorsement of the views or of the goods or services offered therein that they may express. Accuracy of all material is the sole responsibility of the authors. BCHC is not responsible for unsolicited material of any kind.

**Reader Submission:** The Backcountry News welcomes reader contributions, event and calendar dates, and unit news. These will be printed on a space-available basis. Submissions should be sent in a Microsoft Word format to include author and photo credits. Longer articles are subject to edit for space at the discretion of the Editor. Photos may not be returned.

**Deadlines:** Advertising, announcements, pictures and other copy must be received at The Backcountry News by the deadlines listed below.

<u>Edition</u>	<u>Deadline</u>
Spring 2022 Edition	April 15, 2022
Summer 2022 Edition	July 15, 2022
Fall 2022 Edition	October 15, 2022
Winter 2023 Edition	January 15, 2023

**Advertising Rates per Issue:** Rates effective January 2012. All ads must be paid in advance.

<u>Number of Issues:</u>	<u>1</u>	<u>2</u>	<u>3</u>	<u>4</u>	
<b>Full Page</b>	<b>\$150.00</b>	<b>\$142.50</b>	<b>\$135.00</b>	<b>\$127.50</b>	} Cost per Issue
<b>Half Page (h/v)</b>	<b>\$100.00</b>	<b>\$95.00</b>	<b>\$90.00</b>	<b>\$85.00</b>	
<b>Quarter Page (h/v)</b>	<b>\$80.00</b>	<b>\$76.00</b>	<b>\$72.00</b>	<b>\$68.00</b>	
<b>Bus. Card (h/v)</b>	<b>\$25.00</b>	<b>\$23.75</b>	<b>\$22.50</b>	<b>\$21.25</b>	

**Advertising:** All ads must include all fonts and images used in artwork. Ads must be at a resolution of 300 pixels per inch at the actual size used in the artwork. Mail payment to the BCHC Treasurer. Checks returned from the bank will have a \$25 return check fee. No advertising will be accepted from advertisers with outstanding balances. Liability by The Backcountry News shall not exceed the space occupied by the error. Never shall The Backcountry News be liable for any general, special or consequential damages. All claims for adjustments must be made within 30 days of the first publication of said ad.

## 2022 EXECUTIVE COMMITTEE

**Mike Hughes, President** · (760) 223-0608 · 4HRanch@earthlink.net

**Jamie Wilson, 1<sup>st</sup> VP** · (559) 202-7216 · statedirector@bchc-sequoia.org

**Alyssa Alvarez, 2<sup>nd</sup> VP** · (858) 248-9296 · bchc.coordinator@gmail.com

**Susie Patton, Secretary** · (760) 764-2850 · bludog46@gmail.com

**Lynn Joiner, Treasurer** · (661) 747-6347 · lynnjoiner7@gmail.com

**Stacy Kuhns, VP of Education** · (909) 633-1705 · stacykuhns@aol.com

**Chip Herzig, VP of Membership** · (775) 463-3634 · chipherzig@gmail.com

**Troy Patton, VP of Public Lands** · (760) 764-2850 · outdoortroy@gmail.com

**Tammy Bozarth, VP of Youth Education and Custodian of Records** · (661) 322-2545 · spashiners@yahoo.com

**Michael King, Immediate Past President** · (209) 606-8323 · mickngig@sbcglobal.net

**Randy Hackbarth, BCHA Nat'l Director** · (530) 626-0571 · trlryder@pacbell.net

**Robert Anderson, BCHA Nat'l Director** · (661) 978-9630 · lazya01@yahoo.com

**BCHA Alternate Nat'l Director** · Terry Jorgenson · (760) 802-1420 · tlh9749@yahoo.com

## 2022 COORDINATORS

**Accounting** - Weir and Associates · (661) 323-1514

**Annual Meeting** - Susie Patton · (761) 764-2850 · bludog46@gmail.com

**Insurance** - Jamie Wilson · (559) 202-7261 · statedirector@bchc-sequoia.org

**Newsletter Editor** - Carol Jo Hargreaves · (209) 988-5831 · BCHCNewsletter@gmail.com

**Rendezvous General Chairmen** - Stacy Kuhns · (909) 633-1705 · stacykuhns@aol.com

**Saw Coordinator** - Dan Horn · (707) 544-4543 · bearstrap@msn.com

**Volunteer Hours Reporting** - Alyssa Alvarez, 2<sup>nd</sup> VP · (858) 248-9296 · bchc.coordinator@gmail.com

**Webmaster** - Jacque Murphy · (707) 498-6648 · brennalu@hotmail.com

**Youth Activities & Custodian of Records** · Tammy Bozarth · (661) 332-2545 · spashiners@yahoo.com or bchc\_cor@yahoo.com

For more BCHC information, see our website: [bchcalifornia.org](http://bchcalifornia.org)

# President's Page

To provide an answer to a recently asked question of who I am and how did I get attached to Backcountry Horsemen of California, hopefully the following lines will help fill in some blanks.

I originally got into horses in the summer of 1985, encouraged by the prodding of the best of friends, Bill Stephens. From the mid '80s to '90s I was a member of various equine groups. I can clearly recall moving into the Kern River Valley back in 1974 to go to work at Camp Owen as a counselor. Some of my colleagues liked to combine their love of fishing with backpacking trips into the high lonesome. Being a bachelor with not a lot of money, it seemed like a pleasant way to pass the time, so off into the woods I would go. The years and the injuries started to pile up and by 1985 I felt the only way I was going to be able to continue to enjoy the outback was on horseback.

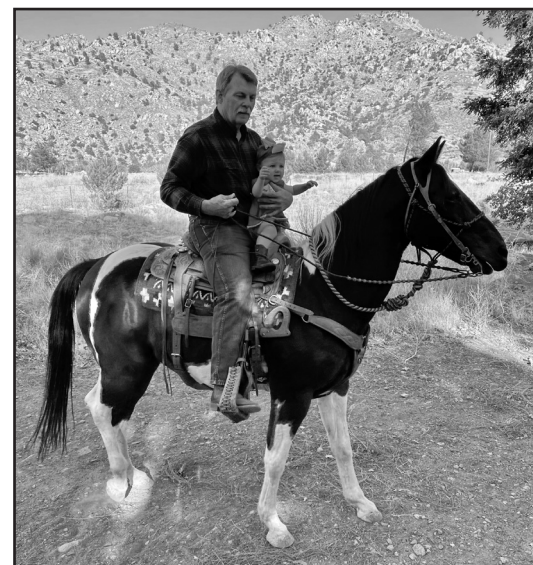
Our daughter, Laina, came along in 1987 and by 1990 our son, Anthony, had arrived. In 1992 I realized if the kids were going to experience the legacy of the grand highlands it was going to have to be done by equine caravan. I just wasn't up to the task of carrying my backpack, the common equipment and their gear into the wilderness. Of course, we did the day loops out of the camp sites, but Anthony was an avid fisherman and the best fishing was in the pristine creeks located far and away in places like the Golden Trout Wilderness.

It was in the 1990's I also discovered the Backcountry Horsemen of California, formerly known as High Sierra Stock Users Association. At Manter Meadow in the southern Sierra Nevada I was introduced to packing and work projects through Dud and Ann Lange. The seeds of a new hobby and way of life were planted. It was a perfect fit finding a group of BCHC types that liked to camp-out and explore the wilderness. This camping and packing activity crossed the spectrum of possibilities from the National Parks, designated wilderness and even some state parks upon occasion. Whether it be in the purple sage, the sand dunes or the star-studded spine of the Sierra, we invariably shared a campfire, trail maintenance and adventures.

Over the span of 30 years, I accumulated lasting memories and packed them like gold coins in the saddlebags of my mind to be carried around wherever I went. Memories of quality time spent with my wife, Susan, and friends, watching my children grow, learn how to fish, how to build a fire, have fun getting dirty and learn the skills of being out in the deep woods. Yes, and teaching my children about their sacred wilderness legacy and the responsibility to leave it better than they found it.

Through these many years, it has been a great honor to interact with a dedicated group of BCHC folks working together to preserve the historic use of trails with recreational pack and saddle stock. I deeply appreciated BCHC members who perform public service activities in partnership with numerous land management agencies and are continually working to educate our members, groups and the general public on sensible techniques for gentle use of the land. It was during a work party at Chimney Peak that we reopened three miles of a previously closed trail. While working this area we discovered two very old caves with pictographs inside. The larger cave also had a flat rock at the entrance with the remarkable feature of grinding holes and a fire site nearby. The view from the opening of the cave overlooking a nearby babbling brook made it all the more unique. Obviously not all the work parties are this glamorous, usually it is just grunt work.

Over the years we have discovered ancient grinding holes with the pestles still in the rock or stacked under shelves nearby. When these types of discoveries are made, we pass the information along to a member of the local tribal council and



**BCHC President  
Mike Hughes**

park ranger as information on the ancients.

We can never forget BCHC's focus is to enjoy the great outdoors by means of equine partnerships while helping to provide access for others wishing to share in this wilderness experience. Clearly, it is understood BCHC cannot accomplish trail preservation on its own without collaboration, alliances and many helping hands. Over the years BCHC has encouraged social and professional interaction on an equal basis with various organizations from local to national levels and covering a wide spectrum of projects. Coalitions with these dedicated groups help seal a bond as we work toward common goals based on the greater good. Some of the connected partners in these excursions are other clubs, organizations, Bureau of Land Management and the United States Forest Service. The main contact for the USFS locally is usually a Recreational Specialist. Often the specialist will supervise a work party at Cannell and Big Meadow for the biannual meadow maintenance. This has included final repairs to catch pens, fence repair and replacement and old

See **PRESIDENT**, page 5

## **FEBRUARY STATE BOARD MEETING**

**Friday, February 4  
Saturday, February 5, 2022**

**Wyndham Hotel  
9000 W Airport Drive  
Visalia, CA 93277  
1 (800) 293-0718**

# BCHC NEWS



**BCHC Editor  
Carol Jo Hargreaves**

## HAPPY NEW YEAR!

The holidays behind me, better eating and more walking ahead of me, I am optimistic about 2022.

I enjoy the beginning of a new year. Traditionally, I am gifted a monthly planner for Christmas and delight in filling in the birthdays, anniversaries, appointments and other special dates on my brand new “clean slate.” As the



**BCHC Secretary  
Susie Patton**

## STATE MEETING SET FOR NEW VENUE

By Susie Patton, State Secretary

The State Board of Directors meeting is set for an in-person meeting on February 4 and 5 in Visalia. This meeting will be held at the Wyndham Hotel. Many years ago, this was the Holiday Inn and we held several of our State meetings there. It is all newly renovated with a new name. The hotel is about 2 hours closer for the southern units than Santa Nella has been over the last few years. We hope the updated facility and new meeting rooms will be a nice change of venue.

The meetings will begin with the Executive Committee on the evening of February 4. State Directors are invited to attend. The one difference is that no meals will be served during this meeting. The Executive Committee will be reviewing all items to be presented and recommended to the Board of Directors the following day.

The VPs of Education and Public Lands will kick off the meeting on February 5 at 9 a.m. Breakfast items will be available. The Board of Directors meeting will immediately follow with various snacks and beverages available. The Board of Directors have a very full agenda. Some of the things on the agenda are approval of two new policies and one amended policy; approval of revised bylaws, and a decision regarding the investment of funds for BCHC. There will be a lunch provided with sliders, sandwiches, salads, and desserts.

An item of importance to all units is a recommendation to update our liability insurance coverage. This policy will offer higher dollar coverage for third party liability. It offers unlimited public and event days at no extra charge. It will cover our Saw and Safety instructors, our youth activities, any facility we rent for damages and has coverage for liability related to liquor usage at an event. Our Insurance Subcommittee - Dr. Jamie Wilson, CJ Hargreaves, and Tammy Bozarth - have done the research in talking to insurance companies, lawyers, and other BCH groups to put together this new policy, and we thank them for their due diligence. The Board of Directors will have a lot to consider with this latest information.

## REMINDER TO UNITS: DUE DATES FOR REPORTS

By Susie Patton, BCHC Secretary

As set out in the BCHC Bylaws, each local unit is required to prepare and render the following yearly reports:

- ✓ By February 1<sup>st</sup> a Volunteer Service Hours Report shall be completed and forwarded to the 2<sup>nd</sup> Vice President of Service – Alyssa Alvarez [bchc.coordinator@gmail.com](mailto:bchc.coordinator@gmail.com). The forms are available on the BCHC website.
- ✓ By the end of February, a financial statement for the past year shall be forwarded to the State Treasurer – Lynn Joiner - [lynnjoiner7@gmail.com](mailto:lynnjoiner7@gmail.com). The forms are available on the BCHC website.
- ✓ By the end of February, the Annual Unit Report that includes all events the unit participated in during the previous year. The form will be sent to each unit or is available on the BCHC website. The report shall be forwarded to the State Secretary Susie Patton – [bludog46@gmail.com](mailto:bludog46@gmail.com)

Failure to file these reports may result in consequences for your unit.

months pass, the planner becomes a combination diary and journal, filled with plans, tasks to accomplish and check off, notes and mementos that I can look back on at the beginning of the next year.

Most of the months-long work of the BCHC Bylaws and Insurance subcommittees has been completed. All committee members worked diligently to bring BCHC up to date as a nonprofit organization. The bylaws now represent what we do and how we do it, insurance coverage was recently purchased for the Education Fund (501c3), and units are being offered an opportunity for simplified, more comprehensive insurance including coverage for sawyers, youth activities and Rendezvous. Both topics will be discussed at the February State Board meeting.

My sincere thanks to Mother Lode, San Diego, Mid Valley, High Country and Eastern Sierra units for submitting informative articles and high-quality photos for this edition of the Backcountry News. We can all learn from each other, share ideas for activities and find new resources by contributing to the BCHC newspaper. This is YOUR newsletter. I welcome your ongoing contributions. The next deadline is April 15 (three days before Tax Day).

Thank you for reading the Backcountry News!

Sincerely,,  
*Carol Jo Hargreaves*, Editor

P.S. If you would like extra copies of the paper to distribute at upcoming unit events, let me know the number you need by the 4/15 deadline and I will arrange to have them mailed/delivered to your contact person.

### **DEADLINE FOR SUBMISSIONS FOR SPRING 2022 EDITION**

of the Backcountry News is: **April 15, 2022**

Send submissions to:

BCHC Editor at [BCHCNewsletter@gmail.com](mailto:BCHCNewsletter@gmail.com)

# BCHC NEWS

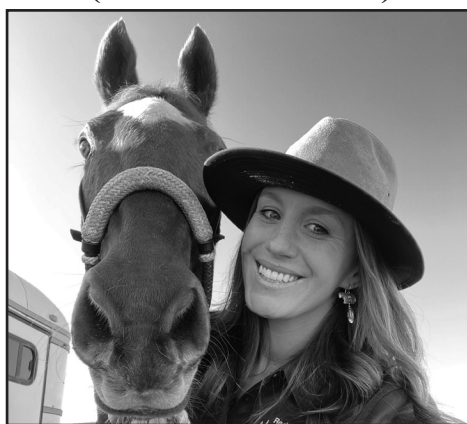
From NEW LEADERS, page 1

## MEET NEW BCHC LEADERS

### PRESIDENT



### 2nd VICE PRESIDENT (Volunteer Service)



### NATIONAL DIRECTOR



From PRESIDENT, page 3

barbed wire retrieval. Frequently on such large work parties, two or more BCHC units will come together to make light of the heavy work. Such is the case frequently with the Santa Anna River Unit and the Kern River Valley Unit joining forces not only as part of our charter, but also to enjoy the land and help maintain the terrain for others. We find volunteering our time, energy and resources a labor of love. A labor we encourage others to join in on to keep the public lands public.

Admittedly there are occasions when BCHC finds itself at crossed paths with others and we are unable to agree on a shared objective such as safe multi-use trails. When this happens, it is imperative that common sense and creative problem solving drive the conversation. Fortunately we also have legal resources available to us and the backing of Back Country Horsemen of America.

During my 25 years in BCHC as a state director, unit president, membership chair, director of public lands, sawyer, packer, youth counselor and jack of all trades on work projects, I have witnessed the changes in the BCHC shared mission and goals. We have evolved from back wide, high and front country stock users to a forceful organization asserting our presence at regional, state and national levels. We have grown from an equine organization to a powerful environmental and political force that can interact and stand up to the powerful lobbyists that attempt to keep our voices, opinions and positions from being heard. The reality is that

See PRESIDENT, page 7

Hello, BCHC members and friends,

My name is Alyssa Alvarez and I am wholeheartedly grateful to have been elected as 2<sup>nd</sup> Vice President of Backcountry Horsemen of California. I have been a resident of Humboldt County, CA, for 14 years and grew up in San Diego, CA.

In late 2018, a friend invited me to a meeting of our local BCH Redwood Unit, where I became an official member and I knew I had found “my people.” I have since become the Member Communications Coordinator for the state and have been voted onto the board of my local unit, Redwood Unit.

When I’m not trail riding with my thoroughbred gelding, Gozo, or training my yearling mule, Boone, I can be found kayaking or doing aerial acrobatics. Aside from my current position as Client Accounts Director with a media marketing company, I am skilled in event coordination and volunteer organization.

I set a goal for myself in 2018 to become a board member of both the state and my local unit because I believe that as an organization, we are capable of doing so much more than we are currently doing. I believe that together we can grow and develop what we have built and bring it to future generations to uphold.

Thank you for the election. I look forward to many more trails and backcountry events in 2022!

Let me introduce myself, I am Robert Anderson, and I am happy to serve as your new National Director.

I started my packing career in the Inyo National Forest, living in the Brown Meadow Cow Camp within the Golden Trout Wilderness. This was during my college days and the desire to pack and be in the wilderness was eternally embedded in my soul from then on.

I joined the High Sierra Stock User Association (which later became BCHC) and have been a member of the Kern Sierra Unit the whole time. I have served in many officer positions in our unit and on some state committees over the years. The communication path between the state and national organizations is extremely important and I look forward to carrying information both to and from our state organization.

I hope to meet you on the trail someday soon.

**BCHC sincerely thanks outgoing President Michael King and 2<sup>nd</sup> Vice President Cindy McMurry for their two years (2020 and 2021) of dedicated leadership. We also appreciate Dennis Serpa for his five years of service as National Director to Back Country Horsemen of America (2017 through 2021). Michael will continue to serve BCHC as Immediate Past President and Dennis will continue his work on the BCHA Executive Committee and as Chair of the BCHA Membership Committee.**

# BCHC NEWS

October 22, 2021

To Back Country Horsemen's Association,

Paradise Horsemen's Association is a non-profit organization dedicated to preserving the Paradise Horse Arena located at 6705 Moore Road in Paradise. Our arena has been in use since the 1960's and had been threatened by town officials in the 1990's to demolish it for other recreational purposes. PHA rallied back with horse owners and equine enthusiasts from all over Northern California to show the Park District, town officials and our community what an asset our Paradise Horse Arena is.

On November 8, 2018, the Camp Fire tore through our town of Paradise destroying just about everything in its path...including our Paradise Horse Arena leased by Paradise Horsemen's Association. We lost 2/3 of our arena railing, storage shed, tractor shed, tractor, arena implements and all of our show equipment.

Before the devastating fire, our arena was deemed one of the most beautiful arenas in California and we had riders come to our events from as far away as Nevada, Bay Area, Central California and up to Oregon Border. The total monetary loss, minus the replacement cost of our arena railing, was around \$38,000.00.

We received many monetary donations from both private, clubs, organizations and members to help us rebuild and restore our arena. This letter is intended to give you an update on where we are now, three years later.

Our priorities for the year 2019 which were able to achieve due to the gracious donations:

- Main water line repaired
- Steel carport for tractor
- New tractor
- New arena implement
- Conex box to store our equipment
- Refrigerator and freezer
- Stump removal from arena grounds
- Arena equipment such as, barrels, poles, playday items, awards, wheelbarrow, hoses, rakes, etc.
- 40 new pipe panels and two gates to temporarily enclose our arena
- Re-graveled our roadway
- New roadway signs

Currently, we are still waiting on our land owners, Paradise Recreation and Park District and FEMA to help us restore our wooden, arena railing and lights. The current estimate is \$41,000.00 for the railing and an additional \$124,000.00 for lights. PHA and PRPD are currently working together to shave down the cost of these projects. PHA is still holding on to some of our donated funds in order to help PRPD with these costs. There are FEMA funds available, but not nearly enough to cover these estimates.

When we have new updates, we will let you know. These last few years have been difficult and the devastation seemed unbearable and daunting, but we are resilient and with the help from many donors, we will see our beautiful arena completely restored to pre-fire conditions. We cannot thank everyone enough who have donated to our rebuild project. Without your gracious support, we would not have been able to rise from the ashes and once again, hold wonderful events for our community.

Respectfully and thankfully,

Scarlett Miller  
President, Paradise Horsemen's Association



## FEBRUARY

4 & 5 - State Board meeting @ Wyndham Hotel, Visalia (In person meeting -1<sup>st</sup> Reading bylaws and new policies)

26 - Officer Training hosted by Kern Sierra - Place TBA

Year-end reports due

## MARCH

19 - Officer Training hosted by Sutter Buttes - Place TBA

20 - Unit Insurance Renewal Deadline



Chip Herzig and Stacy Kuhns present during January 15, 2022 session of Officer Training held in San Diego. Photo by Alyssa Alvarez..



The BCHC Vice President of Education organizes and conducts leadership/officer orientation training annually. Three sessions are offered in 2022 - south, central and north - to be convenient for unit members to attend. The goal of this training is to improve BCHC leaders' skills and abilities to operate local units and strengthen the organization.

# BCHC NEWS

## FIDUCIARY

By Chip Herzig, Bylaws Subcommittee Chair

I start this article with a 25-cent word headline that up until a month ago I had no idea what it meant. Well, it means: "Someone to whom property or power is entrusted for the benefit of another." Why the big word and what exactly does it have to do with BCHC?

As your fearless Bylaws Subcommittee struggled with updating BCHC's Bylaws, we ran across a huge oversight: Nowhere



Bylaws Subcommittee Chair  
Chip Herzig

was the job of director defined. So, searching out sources to define the job of director, we ran across a document (rather lengthy at that) written by California's State Attorney General (the agency with the primary responsibility for supervising California charities) within which the job of director was defined and where we learned the term "fiduciary." All BCHC BOD members are fiduciaries as defined by the California State Attorney General!

The Attorney General went further to define the job of director to include (1) the Duty of Care (2) the Duty of Loyalty and (3) no self-dealing transactions.

The Duty of Care means a director is required to perform with the level of care an ordinarily prudent person in a like position would use under similar circumstances. This includes making reasonable inquiries as needed. The Duty of Care also includes a director's task of understanding all action items in the 30-day notice followed by an inquiry as to how his unit wants him to vote for each item.

The Duty of Loyalty means a director must make decisions that are in the best interest of the BCHC corporation, as well as act in such best interest.

A Self-Dealing Transaction is a contract, agreement, or other action affecting the assets or income of BCHC on which the BOD has acted and in which one or more directors who sponsored the action has a material financial interest.

In summary, BCHC's Board of Directors is charged with conducting business to make BCHC a better corporation.

After all this, I strongly encourage you to read the California Attorney General's Guide for Charities, especially Chapter 7 about Directors and Officers. The Guide was revised in 2021 and you there is a live webinar discussing it, including additional resources on the Guide for Charities page at [oag.ca.gov/charities](http://oag.ca.gov/charities).

**amazon**smile  
You shop. Amazon gives.

From PRESIDENT, page 5

BCHC is a united force willing to confront adversity, sit at any table eyeball to eyeball and insist our input be heard, recognized and implemented in any plans affecting the use and access of public lands.

As your incoming President I look forward to meeting with you and finding common ground to accomplish the Backcountry Horsemen of California shared mission to preserve, protect, maintain and promote trails and public lands.

Sincerely,  
Mike Hughes  
BCHC President

## OUTGOING PRESIDENT'S MESSAGE

Greetings, fellow Backcountry Horsemen members!

How are you all doing with all the rain and snow we recently received? Despite my early prognostications of a dry year, we experienced a prolonged wet weather system through December 2021. It delivered a near record snowpack in the Sierra Nevada, a vital part of California's natural water storage system. For that alone I'm happy to eat my helping of crow for being at least partially wrong! Rain in the central valleys was very plentiful as well.

As part of my job duties, I traveled last week along the west side of the San Joaquin Valley, through the Kettleman Hills near Parkfield to Paso Robles, then south on Highway 101 through San Luis Obispo and Santa Barbara counties to Buellton/Solvang. Those are areas that rely on timely spring rains to make a native grass crop and are still very much in need of additional and timely moisture. Keep those prayers going up for additional rain, as well as sincere thanks for what we have received so far. California has a LONG way to go to declare this drought over. There are reservoirs to be refilled and ground water basins to be recharged to whatever extent that's possible.

The year 2021 certainly dealt us our share of problems. Some were man made and others were those of nature. Wildfires decimated many thousands of acres of grass and timberland, and several communities in the path of the flames were lost. It was heartwarming to see the outpouring of assistance from to fellow neighbors and citizens in need. This is the America we all know and cherish, and it's great to see it show itself again. Never let that spirit flicker and go out. Although I'm sure it's an attribute not unique only to Americans, in my humble opinion we do seem excel at it.

Lastly, the employees of our various fire agencies gave their all and then some to try to stop the very destructive and, out of- any-measure-of-control wildfires. These firemen deserve a huge hand for their efforts.

As a result of the fires, many forest administrators will be limiting access to the burned areas to recreationalists and Backcountry Horsemen trail work crews alike, until hazardous trees are felled and falling rock dangers are mitigated. Reports are being heard of some forests being closed for several years. We need to continue to offer our assistance anyway, however possible. There is much work to be done and we have skills and equipment to offer.

See PAST PRESIDENT, page 16

# BCHC STRATEGIC PLAN



## THE SEVEN PRIORITY OBJECTIVES OF BCHC'S STRATEGIC PLAN

Seven objectives form the core of BCHC's strategic plan. In the plan, each objective is accompanied by a description of desired outcomes and an action plan units can follow to implement the objectives.

Each unit will negotiate its implementation selections and responsibilities after the strategic plan has been formally adopted by Board vote.

The seven objectives are:

1. Enable more trail maintenance and trail support projects
2. Make program of best practices available to local units
3. Rebuild Rendezvous attendance
4. Youth program development
5. New member development and retention
- 6. Website and social media transition**
7. BCHC services available to local units



## HERE'S MORE DETAIL:

### 6. Priority Objective: WEBSITE AND SOCIAL MEDIA TRANSITION

**Success Measures:** Frequency of checklist downloads by units (other measures may include downloads, traffic statistics, time on each site, engagement, shares, etc.)

#### Strategy - State and Unit Websites:

State and unit websites are used primarily for:

- *Distribution of information resources*, including checklists and outlines of best practices, resources from national BCHA and information being developed from these Priority Objectives. Event information is also available.
- To direct potential new members to the membership chairperson in each unit.

#### Strategy - State Facebook Page:

Primarily to build community for current members: distribute news, events, share experiences, a community-building forum (add specific groups within?), two-way communication with our members, and as an outreach platform to other like-minded organizations. Members rely on it for event details.

#### Strategy - Unit Facebook and Instagram Pages (optional):

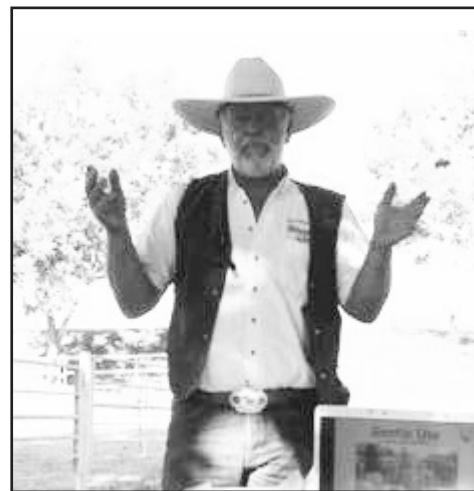
Use social media platforms for local units to attract new members from within current members' social networks. Instagram reaches Instagram reaches millennials, Facebook reaches parents and grandparents but overall with more wide demographics than other platforms.

Snapchat reaches tweeners (<https://www.flint-group.com/blog/social-media-demographics/>). Think about the right platform for the target audience we are speaking to, for creating community within the units (local experiences) and for reaching out to new members.

*For more information about BCHC's Strategic Plan, see your unit or state leaders.*



# EDUCATION



**BCHC Saw Coordinator  
Dan Horn**

## BCHC SAW PROGRAM

By Dan Horn, Saw Coordinator

Happy New Year to all. Here is hoping 2022 is a better year and we can get back to some activities. With the lock down and limited function confusion of the past two years, we have been working on extensions for both Saw Cards and First Aid & CPR.

Saw Card Extension - if your Saw Card expired after October 9, 2019, it has been extended until December 31, 2022. If things don't open as we are hoping, National Forest Service (NFS) will look at it again.

First Aid and CPR - extended until April 8, 2022, and still must be an in-person class.

2021 was limited, but we were able to do some classes and re-certifications statewide. Both new Sawyers and re-certs combined, we did 35 Chainsaw and 52 Crosscut. We added six new Instructor Trainees.

NFS is supposed to roll out changes in the National Saw Policy this spring that have been pending for the two years of all this COVID drama. The policy will facilitate the safe use of chain saws and crosscut saws with the intent of optimizing critical skills and cooperative opportunities for trail maintenance and other projects on NFS lands.

The biggest news we have been told is the separation of Bucking and Felling at the "C" Evaluator Level. This change will get us back two of our "C" Evaluators and make it easier for any of our existing "C" Sawyers to move up the ladder. So far, we have not seen a draft of all the changes, so when it does come out, we will send out a list of changes.

This spring 2022, we have several classes scheduled around the state:

Santa Rosa Area: Contact Dan Horn, North Bay Unit (707 )953-4903  
Chainsaw: 2/19/22

Bakersfield Area: Contact Patrick Shreffler, Kern River Valley Unit (661) 303-0362 or Robert Anderson (661) 978-9630 for more information  
Chainsaw: 4/23-24/22  
Crosscut: 4/30-5/1/22

Red Bluff Area: Contact Louwrens (Remco) van der Linden, Mother Lode Unit (530) 537-9366 or Tiffany van der Linden, Mother Lode Unit (916) 759-7355  
Chainsaw: 5/7-5/8

This class will be our annual "C" Sawyer Class with Dan Chartier. So, any "B" Sawyers throughout the state who would like to challenge cutting for a

"C" Card this is your once-a-year opportunity.

Sacramento Area: Contact Louwrens (Remco) van der Linden, Mother Lode Unit (530) 537-9366 or Tiffany van der Linden, Mother Lode Unit (916) 759-7355

Chainsaw: TBA

South of the Grapevine: Contact Michael Lewis, Redshank Riders Unit (951) 760-9255

Chainsaw: TBA

Crosscut: TBA

Or, if you wish, you may call me: Dan Horn, Saw Program Coordinator, (707) 953 4903; email Bearstrap@msn.com

All dates are subject to change and whatever COVID restrictions may be in place at that time.

Application for class and all required reading materials are available on the BCHC website (bchcalifornia.org), "Saw Training" tab.



**BCHC Vice President of  
Education  
Stacy Kuhns**

## HOW TO REQUEST EDUCATION GRANT FUNDS

By Stacy Kuhns, VP of Education

When do we ask for Grant money? Unit projects, i.e., building an educational kiosk or for an educational booth at events. There are specific qualifications for the projects. We have a new process any time funds are requested from the BCHC Education Fund, Inc.

Applications must be submitted no later than the 1<sup>st</sup> of March and /or 1<sup>st</sup> of September of the year of the grant application and must be signed by the unit president. Incomplete or unsigned applications will be returned for completion and may delay funding. All qualifying projects must include components that include Leave No Trace education.

Work projects will qualify when the grant application and subsequent reporting confirm that the educational component was presented at some point during the project. It is specifically noted that ongoing education of BCHC members must be accomplished in order to successfully have educational knowledge and material to offer the public.

Here is the process: Refer to BCHC's Grant Funds Request Policy # 0221-3 for more details, requirements and forms (see bchcalifornia.org/Grants) To apply for State Education Fund Grant - Complete all pages of Forms 1, 3 and 5 To apply for Unit-Specific Education Grant Funds Policy - Complete all pages on Forms 3, 4 and 5 Form 2 – Grant Committee Use only

# EDUCATION

## LEAVE NO TRACE MASTER EDUCATOR PROGRAM

By Dan Horn, Master Educator Instructor

I want to start this article with some history of BCHC's Master Educator Program. At the time the BCHC Wilderness Riders (W/R) were formed, the "Leave No Trace" (LNT) program was being run by the National Outdoor Leadership School (NOLS) in Wyoming. NOLS did not allow anyone to use their LNT materials for any reason. So, in the beginning, BCHC's Wilderness Riders were forced to create and use the Gentle Use Program to teach and spread the use of outdoor ethics. The Gentle Use (GU) Program served BCHC well for many years.

When I joined the Wilderness Riders in June 2001, I was trained under the BCHC Gentle Use Program. In September of the same year, I was able to take a LNT Master Educator Course that could only be taught by NOLS. The Master Educator Course was based on the international values of the seven principles of "Leave No Trace." The LNT and Gentle Use programs were similar, but the LNT language was already well-known throughout agencies worldwide.

In 2007, the National Park Service moved the LNT Master Educator Program from NOLS to the newly developed Center for Outdoor Ethics in Boulder, Colorado. This move was the opening of the door for other organizations like BCHC to use the LNT teaching materials and logo for the price of an annual membership fee.

During that same timeframe, 2007 to 2010, I had been pushing to try to spread the message of the Wilderness Rider Program of Gentle Use teachings to a national level of Back Country Horsemen of America, with little to no success. At Rendezvous in 2010, Jerry Ledbetter, a longtime Wilderness Rider and LNT Master Educator, took me aside for a conversation on my efforts of trying to expand the Gentle Use Program. Jerry's first question was why I was trying to reinvent the wheel, which left me a bit puzzled. Over the course of an hour-long conversation, Jerry convinced me that the language of LNT was already an internationally branded program and would be a much easier sell than BCHC's Gentle Use Program. This I had already had experience with. When trying to talk with different agencies we were always having to reference our GU Program as being like LNT. So began a multi-year effort to transition from GU to LNT teachings and materials. BCHC's Wilderness Rider trainings were an easy transition, we already had a requirement that the W/R instructors had to be LNT Master Educators and, with BCHC becoming a member of the Center for Outdoor Ethics (the Center), we were able to train and certify the new W/R classes as LNT Trainers.

During my many hours of conversation with the Center in Colorado, setting up BCHC's membership and trainer program, I learned that it was now possible for BCHC to become a contracted provider of the LNT Master Educator Course.

In 2014, with the blessing of the BCHC State Board of Directors (BOD), BCHC applied for a five-year contract as a provider of Leave No Trace Master Educator Stock Courses to the Center for Outdoor Ethics. This established BCHC as the only LNT Master Educator Stock Course provider in the world. You heard me right. We are the only Stock Course in the world. The contract started in 2015 and would run for five years.

In September 2014, we held a class at the Forest Service Center for Excellence Bowerman Barn facility, Trinity Lake, Weaverville, CA. The requirement for students of this Instructor Class was that they needed to already be LNT Mas-

ter Educators. Searching throughout the BCHC membership, we were able to find 10 folks that held a Master Educator course certificate. This class focused on training Master Educators as Master Educator Instructors, the top of the list in the LNT world. We were able to arrange that Ben Lawhon from Colorado would fly out and the second instructor would be Ken Graves from the National Forest Service. I think there are only about five or six of the original group left with this rating now.

After a successful two years of classes during which time we were restricted to the state of California, we were given permission to expand classes throughout the nation. We were hopeful that Back Country Horsemen of America would help promote and support this "traveling road show" proposal, but their support was less than what we had hoped for. The original goal with this program was to have BCHC Masters spreading the Leave No Trace message across the nation and then try to get permission for us to go international. I don't know about you, but I have always wanted to see the horses of Mongolia. Ben Lawhon had some very interesting stories to tell about his experiences trying to teach through an interpreter.

Marketing BCHC's Masters of Education courses has been our biggest struggle. We have all the rest covered - instructors, logistics, etc. - but we sure could use some help with marketing. Surely somewhere among our vast number of members there must be someone who can help us. It would be wonderful to have someone take this on. Maybe not lead this effort (although that would be great) but give us some direction and training.

Today outdoor ethics seem to be lost among users. We hear horror stories from all areas. One year after 4<sup>th</sup> of July fireworks in Tahoe, volunteers picked up 1,400 pounds of trash left by folks on the five public beaches that were open that night. We all see trash left on trails everywhere. It seems folks think there is a janitor that comes in behind them to clean up. Statistics prove that education works better than law enforcement of these areas.

Being the only provider of LNT Master Educator courses west of the Rocky Mountains, BCHC could be a real leader in North America. We need to somehow get BCHA on board.

Most of our Master Educator Instructors are Wilderness Riders, but that is not mandated by our contract with the Center for Outdoor Ethics. In fact, one of our original instructors (one of the original 10) was just a Master (Sam Burrows). The Wilderness Rider Training courses are different; those instructors must be Wilderness Riders but the general public Master Educator courses only require a Master Educator Instructor. So, if you have an interest in helping us expand the teachings of LNT, please contact BCHC's Vice President of Education Stacy Kuhns at [stacykuhns@aol.com](mailto:stacykuhns@aol.com) or me at [Beastrap@msn.com](mailto:Beastrap@msn.com), and we can answer your questions.

I think BCHC needs to get behind our VP of Ed Stacy, find someone with marketing skills, help expand the program with more instructors and work with BCHA to help promote the LNT Master Educator Program through all BCHA chapters nationwide.

Expanding LNT training is a huge opportunity for BCHC to leave a lasting mark on user history.

# PUBLIC LANDS

## PUBLIC LANDS REPORT – WINTER 2022

By Troy Patton, BCHC VP Public Lands

Congratulations to the Redshank Riders Unit on receiving the Pacific Crest Trail Association Partnership Award for their commitment to collaborative stewardship of the PCT across agency boundaries. Their partnership and professional, friendly and reliable support have enabled critical trail maintenance and restoration efforts over the last decade. Their tireless efforts bringing tools and supplies to remote places for maintenance projects will benefit the trail for many years to come! Also, Stacy Kuhns, BCHC VP of Education and member of Redshank Riders, received the very prestigious Ben York Trailblazer Award during a ceremony at Rendezvous. (See page 14 in this newsletter.) Great job, Redshank!

Another victory for Public Lands was in San Diego County where Terry Jorgensen, President of the San Diego Unit, was finally able to get Cuyamaca State Park to acknowledge that you must have a horse to camp in the horse camps and they will be enforcing this rule. Terry had been working on this for over five years. She gets the award for perseverance!

We are currently working on another battle in Folsom Lake State Recreation Area (FLSRA), where they are using a Change in Use Rule (CIU) procedure which only requires one letter to request the Change in Use and triggers the process to review the trail. A bike club sent a letter requesting to change trails in the Browns Ravine area to multi-use. Browns Ravine Trail is an unpaved, 11-mile mainly single-track trail connecting Browns Ravine to the Old Salmon Falls Trailhead. The project proposes to change the trail use designation from hiking and equestrian to multi-use, which would add bikes and open the door for e-bikes as an allowed use.

The CIU evaluation noted was that portions of the Browns Ravine Trail are used regularly by mountain bikers. Meaning: the bikers are already, regularly, and illegally using this trail. State Parks CIU's reasoning and the CIU solution is to legalize current illegal use rather than patrol it. Since bikers are illegally (and unsafely) using all the foot trails in the park, one question to ask is will this CIU reasoning process be the plan for all trails in this park?

Many trail users have complained to FLSRA regarding illegal bikes and their reckless speed on this trail via phone, email, and letters but there is no process by which these complaints are gathered or can be accessed. The result is FLSRA findings state there are few demonstrated safety concerns as they only considered 911 calls as complaints. The CIU does not require any patrolling by rangers, and they do not plan to enforce the speed limit of 15 mph.

**We would like each unit to send a letter to [trails@parks.ca.gov](mailto:trails@parks.ca.gov) stating you do not agree with this change. The DEADLINE to comment is January 31, 2022. We thank Randy Hackbarth, President of Mother Lode Unit and BCHA National Director, for doing the research to bring this to the attention of BCHC. This is the kind of networking we need to stay on top of Public Lands issues.**



Pictured, left to right, are Mike Lewis, President of Redshank Riders Unit, Anitra Kass, PCTA representative, Stacy Kuhns, Director of Redshank Riders, Greg Bruce, Redshank Riders Unit Past President and Jack Peckham, Vice President of Redshank Riders Unit, receiving the PCTA Volunteer Award for 2021.

### DEADLINE FOR SUBMISSIONS FOR SPRING 2022 EDITION

of the Backcountry News is: **April 15, 2022**

Send submissions to:

BCHC Editor at [BCHCNewsletter@gmail.com](mailto:BCHCNewsletter@gmail.com)



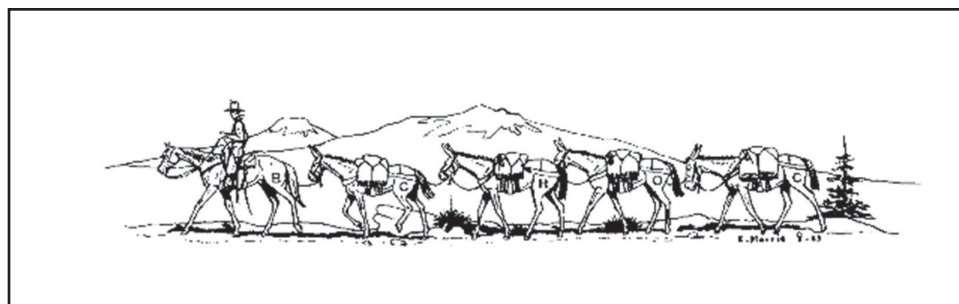
**BCHC Webmule  
Jacquie Murphy**

Be sure to check out our website, [bchcalifornia.org](http://bchcalifornia.org)! If you're not a member of Backcountry Horsemen of California, much of the information you'll be looking for will be available in this area.

If you are a member and are looking for more information about running your unit, newsletters, forms, volunteer hours, Wilderness Riders, etc., please click the gray "Member Site" button.

As always, I am happy to help you with any questions, updates, or requests about our website. Don't forget to follow us on Facebook too: @BackcountryHorsemenofCalifornia.

~ Jacquie Murphy  
BCHC Webmule



# RENDEZVOUS 2021 - "PRESERVING OUR

## KUHNS WINS BEN YORK AWARD

The Ben York Trailblazer Award is presented as determined by accomplishments to the member who, in the eyes of the judges (BCHC Past Presidents), blazed new trails in some facet of the operations of the organization. Any member may nominate, by letter, anyone he or she feels has demonstrated qualities of a "trail blazer".

The award was created in honor of Dr. Ben York, Jr., DVM, who rode the entire length of the Pacific Crest Trail in the spring, summer and fall of 1992. His ride took place during the last year of his BCHC Presidency. Dr. York rode the PCT to promote trail riding and the goals and purposes of Backcountry Horsemen.

The 2021 Ben York Award was given to Stacy Kuhns, Vice President of Education, for her continuing work to improve BCHC's education programs.



### INDIVIDUAL VOLUNTEER SERVICE AWARD

Congratulations to Denise Robinson

Sierra Freepackers Unit

### Raffle Winners:

Golden Boy Rifle - Mike Hughes, Kern River Valley Unit  
 Quilt (made and donated by Cindy McMurry) - Barbara Newsome, Mid Valley Unit  
 Pack Saddle (made and donated by Lee Roeser) - Walt Davis

### 2020 TOP HAND AWARD WINNERS

Every year each unit President selects an individual that, in the President's estimation, provided the greatest service to the President and to his/her unit. The award itself is a stainless steel cup engraved with the year and name of the recipient. The selection is not necessarily made from unit officers or board of directors. This award was first presented at the 1988 Convention and continues to be a popular award.

Antelope Valley	Jerry Stone
Eastern Sierra	Chip Herzig
High Country	Alan Cain
High Sierra	Cathy Caskie
Kern River Valley	Larry Cigainero
Kern Sierra	Bonnie Searcy
Lake-Mendo	Donald Bone
Los Padres	Ryan Turner
Mid Valley	Dave Rumsey
Mother Lode	Joyce Radell
North Bay	James Kelly
Pacific Crest	
Redshank Riders	Mike Lewis
Redwood	Clyde Dalton & David Griffith
San Diego	Walt Kirkwood
San Joaquin Sierra	Jim Dixon
Santa Ana River	Alan Sanderson
Sequoia	
Shasta Trinity	Dan Chartier
Sierra Freepackers	Teri Cook
Sutter Buttes	Carolyn Wood
Top of the State	Michele Machado

Congratulations, Top Hand Award winners! Thank you for your service to your unit and to BCHC!

### TABLE DECORATIONS:

Best Represents BCHC and Best Overall - High Sierra Unit

Most Creative and Most Humorous - Redshank Riders Unit

# TRAILS FOR FUTURE GENERATIONS"

## COCHRAN PRESENTED FIRST ANN LANGE MEMORIAL PUBLIC LANDS AWARD

By Marily Reese and Troy Patton

When Ann Lange passed away, Public Lands and BCHC lost a dear friend. Ann fought to keep trails open to saddle and pack stock, meaning wider trails. When the Forest Service wanted to eliminate trails because there were too many in the inventory, Ann Lange got to work. She fought to keep as many trails as possible open. When the Forest Service published the list of trails to be closed, Ann contested the process and through negotiations was able to retain even more trails in the inventory.

Upon Ann's passing a proposal was made before the BCHC Executive Committee to present an annual award to a BCHC member who has done outstanding work in Public Lands. This was approved by the State Board of Directors, and nominees were sought.

There were many outstanding nominees, all worthy of the award. The selection committee consisted of Terry Jorgensen from the south part of the state, Troy Patton from central part, and Cindy McMurry from the north. All entries were read and studied by the committee. Lynn Joiner found a beautiful award made of natural wood to present to the winner. The winner of this first Ann Lange Memorial Award is Richard Cochran of the High Sierra Unit. The award was presented to Richard during dinner at the Rendezvous 2021. Below is a copy the winning application submitted by Marily Reese.

-----  
 "It is with great honor that the High Sierra Unit nominates Richard (Dick) Cochran for the 2021 Ann Lange Memorial Public Lands Award. Not only has Dick gone 'above and beyond working in Public Lands, meeting with agencies and advocating for trail improvements, but he and Ann were great friends and they worked diligently together for many years on critical issues related to stock use on our public lands. They served together as National Directors for the BCHA and conferred on many Forest Service and Park Service management plans. Here is his story.

But first – a bit of history that goes back to Dick's involvement with the very beginnings of the High Sierra Stock Users Association, later to become the High Sierra Unit of the Backcountry Horsemen of California. (Taken from the 2000 BCHC Officer Manual). In the fall of 1980 Max Cochran (Dick's father and namesake for the 'Max and Irene Cochran Annual Newsletter Award') was on a trip to Lion Meadow on the Little Kern with three experienced backcountry packers: Francis White from Woodlake, Howard Glover, and Clovis and Rudy Rudholm of Fowler. Sitting around the campfire, with Diane and David House from Taft, they talked about the possibility of forming a horse association related to the interests and concerns of stock users in the Sierra that might meet with Forest and Park Service officials on land management plans and user policy. On the way out they met Don Bedell at Gray Meadow, who was packing out a party at Soda Creek. They asked Don what he thought of such an organization that might support the interests of private and commercial packers.

After the first of the year 1981 Max and Richard Cochran, Frances White, Don and Phyllis Bedell, Ray Banks, Bill Wylie, Ray and Eugene Kellog met at the Bedell's home in Three Rivers for lunch. Max had prepared some written objectives for an organization, and these were reviewed. They each agreed to ask four or five other backcountry users to a meeting to be held at the State Forester's office. Ray Banks was asked to chair the meeting with Max to act as Secretary.

Over 60 people attended this preliminary session which encouraged the attendees to schedule the next meeting. A few weeks later the first official meeting held in Tulare where over 200 attended. Officers elected were Ray Banks, President, Ray Longley, Vice President, Everett Welch, Treasurer, and Max Cochran, Executive Secretary. Dick Cochran wrote the bylaws."

"Spring of 1985 – Representatives of The High Sierra Stock Users and Back Country Horsemen from Idaho, Montana and Washington met in Washington State to initiate the formation of the Back Country Horsemen of America.

Bylaws were approved and policy statements drafted. Lloyd Fagerland of Montana was elected Charter Chairman for the organization. The meeting was held in conjunction with the BCHW state convention. California Representatives were Everett Welch and Charles Morgan. Later Board representatives included: Max Cochran, Jim Wells, Mylon Filkins, Dick Cochran, Ann Lange and Alan Hill."

Thus was the origin of the Back Country Horseman of America – and a long future ahead for Dick Cochran and Ann Lange to work together.

The formation of a stock advocacy group happened not a moment too soon. Sequoia & Kings Canyon National Parks had issued an update to their "Plan for the Management of Backcountry Use." The plan was renamed the "Stock Use and Meadow Management Plan" which had numerous meadow and trail closures, such that it would have been impossible to take a stock trip through the Park's backcountry. A dedicated group rolled up their sleeves, contacted their Congressman (Chip Pashayan) as well as the Secretary of the Interior, William P. Clark, to object to the plan. They gained the support of Rep. Pashayan and Mr. Clark and the Park Service was directed to work with this new group and negotiate their differences. The group who worked on this effort included Jim Harvey, Jack Rogers, Lynn Joiner, Everett Welch, Ron Paregien, Neil McDougald, and Ann Lange. Dick headed up the group. Dick and Ann were knee deep in protecting trails for stock users.

This effort was the beginning of the legitimacy of stock users being able to sit down and negotiate with the Park Service. It became a model for other parks to follow and it opened the door for stock users to have input into management plans.

Through the decades, Dick has continued following all of the management plans, wilderness plans, and other activities in Sequoia & Kings Canyon National Parks, clear through the 2015 Wilderness Stewardship Plan. He has also been involved in reviewing and providing input into numerous National Forest and Wilderness Plans throughout the High Sierra. He served as a National Director for BCHA, Chair of the Public Lands Committee for BCHC, President of the High Sierra Unit, and Chair of the Public Lands Committee for the High Sierra Unit. He continues to serve on the Public Lands Committee of the High Sierra Unit.

I know that Ann would be thrilled to have Dick selected as the recipient of the award in her honor. Thank you for your consideration of Richard (Dick) Cochran for this award."

-----  
 On behalf of the members of BCHC, we would like to thank Richard Cochran for his many years of service and dedication to the organization.

### DUTCH OVEN CONTEST:

Sheila Bond, Mother Lode Unit

and

Kelli Land, Sierra Freepackers Unit



# RENDEZVOUS 2021 - "PRESERVING OUR



Pool noodle horse race



Calf dummy roping



Box hitch instruction



Leather crafts



"Help, I'm Lost" LNT instruction



Crosscut saw on a sawbuck



Visit from youth mascot, Hitch



LNT camp

## KIDS CORRAL A HUGE SUCCESS

By Tammy Bozarth  
VP of Youth Education

Having the Rendezvous on Halloween weekend gave BCHC an unusual opportunity to include costumes and decorations to enhance the youth experience. Lots of family fun was had including pool noodle horse creation followed by horse races, calf dummy roping, arts and crafts with leather, other Halloween themed crafts, a costume contest, trick or treating at the vendor booths, pumpkin decorating, a coloring contest, LNT classes with "Help I'm Lost," and beginning box hitch instruction on an iron mule. The youth also got a taste of the crosscut saw and sawbuck with the help of Dan Horn and his Saw Program crew. A visit from one of the BCHC youth mascots, Hitch, was a special treat! (Unfortunately, Diamond had another commitment.)

The Kids Corral was a huge success thanks to the volunteers that assisted with the activities. I would like to thank Kelli Land, Sierra Freepackers Unit, for her excellent leather crafting skills; David Pritchard, Redwood Unit, for his expertise with the rope and patience with very excited kids as they roped the dummy for the first time; Cindy McMurry, High Country Unit Wilderness Rider, for her exceptional class on "Help I'm Lost," her assistance with LNT camp creation, and we can't forget her skills as a handler for the Youth Mascot, Hitch. Finally, my sincere thanks to Joyce Granger, Sierra Freepackers Unit, for being there with her kids the entire three days, assisting all the way. I couldn't have done it without all of you!

# R TRAILS FOR FUTURE GENERATIONS"

## SEEN AT RENDEZVOUS



### PACKING CONTESTS

#### Youth Box Hitch

- 1st - Sam
- 2nd - Callahan
- 3rd - Audrey

#### Youth Diamond Hitch

- 1st - Audrey

#### Interscholastic Box Hitch

- 1st - Cody
- 2nd - Blake
- 3rd - Justin

#### Interscholastic Diamond Hitch

- 1st - Cody
- 2nd - Blake
- 3rd - Justin

#### Interscholastic Odd Load

- 1st - Ashley/Cody
- 2nd - Blake/Justin

#### Adult Box Hitch

- 1st - Garrett
- 2nd - Jestine
- 3rd - Lee

#### Adult Box Hitch

- 1st - Garrett
- 2nd - Greg
- 3rd - Anna

#### Adult Box Odd Load

- 1st - Anna/Garrett
- 2nd - Jack/Greg
- 3rd - Jestine/Lee



# UNIT NEWS

## MOTHER LODGE UNIT:

## HOUSTON BROTHERS WIN AT RENDEZVOUS 2021

Text by Lucy Badenhop  
Photos by Nathaniel Houston

One family in the Mother Lode Unit is actively training the next generation in Back Country Horsemen skills. Alyson and Nathaniel Houston have five children – Tess (age 15), Hayden (age 13), Wyatt (age 10), Liam (age 8), and Kate (age 5).

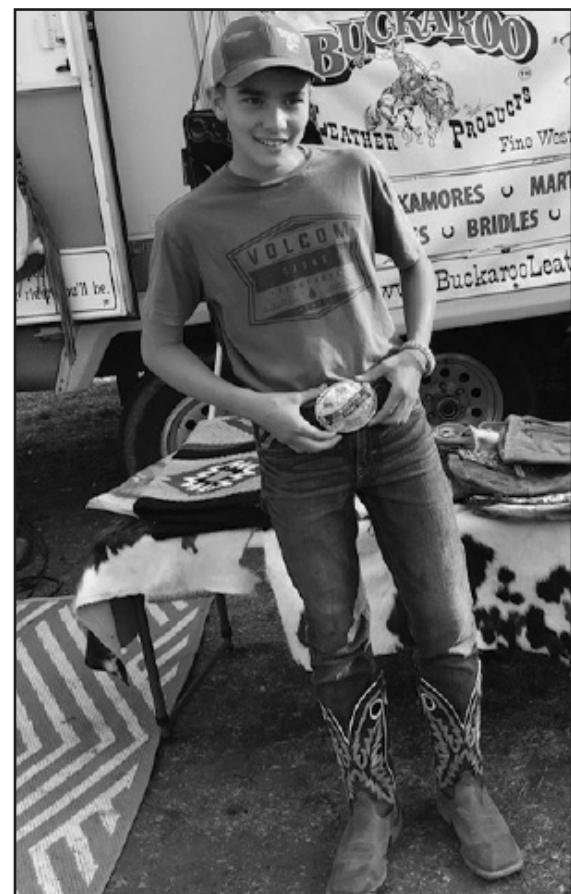
The family demonstrates the knack of blending city and rural lifestyles. The parents both have city jobs – Nathaniel is a program manager for the county’s adult public guardian program and Alyson is an elementary school teacher. The family lives in a log cabin on 13.5 acres with four horses, a flock of chickens and a dog named Scout. Their future plans include getting a cow.

Mom is the hearth tender and cares for the homestead while dad takes those interested in riding on packing trips into the back country. Tess still rides occasionally, but high school activities demand more of her attention. Brothers Hayden and Wyatt took first and third place in the Western Art Contest at the 2021 Rendezvous competitions. Hayden also won the high point wrangler buckle for his age group. Liam has not yet exhibited symptoms of the equestrian bug, but five-year-old Kate is an avid rider.

The Houston family looks forward to many more trail rides, pack trips and participation in Rendezvous activities.



Wyatt with his third place entry in the Western Art Contest



Hayden wearing his high point wrangler buckle



From PAST PRESIDENT, page 7

Moving on to BCHC’s 2021 Rendezvous financial outcome. Held at an unusual time of year – October - due to continued COVID interference in one form or another, Rendezvous was still a success. Despite a lower than usual attendance, the event was still able to show a profit of approximately \$12,000. I was astounded at that news, but very happy none the less. Everyone who attended seemed to have a great time, if for no other reason than to get together with old friends not seen for a while.

Unless an informal get-together is mustered for 2022, the next formal Rendezvous will occur in 2023. Not sure of the location yet but start saving your nickels because we want to have a huge celebration wherever it will be. By that time, we won’t have seen some of you for four years or longer. That’s way too long.

I’m not sure if this will be old news by the time you receive this newsletter, but last year I established a committee to review BCHC’s insurance needs and current coverage. This committee did a stellar job of research and discovered some deficiencies and areas where additional coverage was needed. A new carrier and policy were located that offer some great improvements and additional coverages. As with all things better, the new policy premium will be higher, but with better coverage and fewer hoops to jump through. The Executive Committee has recommended approval by the State Board of Directors at the February 2022 meeting.

This is the end of my two-year term as BCHC President, and I am now turning the

reins over to the very capable hands of Michael Hughes. He is very enthusiastic about BCHC and is well prepared to lead this great organization into the future. Please give him all the support and best wishes you have afforded me. I would greatly appreciate that.

One final bit of my thinking for you all to ponder. Get involved - at your unit level or at BCHC - it doesn’t matter where you start, just do it. There is always a need for new people with new thinking and new ideas. Encourage one another, don’t make it your life’s mission to tear someone else down. Listen, instead of criticizing. No one has cornered the market on new ideas.

I remember taking a class at Cal Poly where the topic of brainstorming ideas came up. The point was to listen to and write down all ideas, no matter how sketchy they might seem at first. With a little massaging, one might just be a really great idea. Let’s hear your ideas, we’re all ears. One critical place for ideas is attracting new and especially younger members. Someone out there has the answer; let’s hear it!

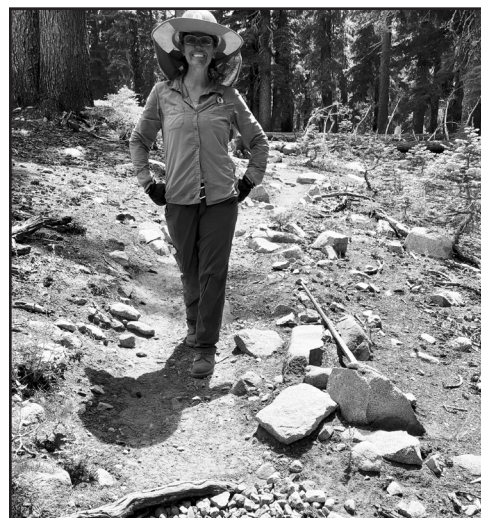
Thank you all again for the opportunity to serve. I hope I made a positive difference. I’ll leave you with this one last piece of wisdom I read recently: “The future has been losing the wisdom of the past, ever since the freeway bypassed the corral.” (Author and philosopher unknown). Dwell on that for a while and remember the need to get our kids exposed to the corral. Take care and God bless every one of you.

*Michael King*  
Immediate Past President



# UNIT NEWS

## MOTHER LODE UNIT:



## DESOLATION WILDERNESS GETS HELP FROM MLU

Text by Lucy Badenhoop  
Photos courtesy of Tahoe Rim Trail Association

Every year, Mother Lode Unit (MLU) gets a request for pack support from the Tahoe Rim Trail Association (TRTA) to support trail crews working in Desolation Wilderness near Lake Tahoe on two major trails. Usually, MLU receives four or five trip requests annually, but the COVID restrictions in 2020 and the fires in 2021, reduced that to two each year.

The Tahoe Rim Trail (TRT) and the Pacific Crest Trail (PCT) share trail tread near the top of the Sierra Nevada Mountain Range as the trails pass through multiple forests near Lake Tahoe. The Tahoe Basin Management Unit integrates the management efforts of the various forest managers. The TRT and PCT Associations coordinate their volunteer maintenance crews and request special assistance from other trail support groups in the area, like BCHC Mother Lode Unit.

The 2021 request focused on a 1.5-mile section of trail between Echo Lake and Phipps Creek. This portion of the two trails is about 6,400 to 8,100 feet elevation and is popular, so it gets heavy usage. The trail crew reconstructed trail tread using native stone for a long-lasting and effective solution to the deleterious effects of high use and erosion on the trail. They improved or replaced water bars and drainages, plus built several more check steps.

The MLU packer contribution was to haul the crew's heavy gear and supplies to their campsite, one trip in July and one in August. This allowed the trail crews more time and energy to work on the trail tread. When the planned work was done, the trail crews hiked out with their much lighter backpack loads of only personal gear.

Packer travel expenses were partially mitigated by a grant from the National Wilderness Stewardship Alliance.



# UNIT NEWS

## MOTHER LODGE UNIT:

### MLU SHARES GRANT WRITING TIPS

By Lucy Badenhoop

For the first time ever, the 2021 BCHC Rendezvous presented a grant writing class sponsored by the Mother Lode Unit (MLU). MLU started applying for grants in 2015 and has been awarded nine grants through 2020 totaling \$92,660. The grants supported seven projects with a total value of \$409,858. (See table below.)

Grant funds paid for the purchase of equipment and supplies or reimbursed mileage expenses for the volunteers (especially sawyers and packers who haul stock). Equipment purchases included banners, special gravel panniers, chain saws, grip hoist, a display booth for Leave No Trace and hand tools for a Boy Scout troop to perform trail maintenance. Supplies ranged from gravel/asphalt, steel for high line posts, signage and LNT card handouts.

MLU wants all units to know that writing grant applications is not difficult and can be a one-person effort or a group effort. It does require meticulous adherence to grantor directions, detailed record keeping (costs, hours and in-kind donations), realistic scheduling, and persistence in identifying lessons learned when you fail.

MLU is willing to share their lessons learned with other BCHC units. For a copy of the class handout, "GRANT WRITING – Basics for Beginners," contact Lucy Badenhoop at [badenhoop@comcast.net](mailto:badenhoop@comcast.net).

YEAR	GRANTOR	AMOUNT	PAID FOR	PROJ. VALUE
2015	None			
2016	NWSA	9,738	Packer Equip & Miles	24,344
	RAC	31,000	Gravel - Caples	105,402
	STEP	8,225	Gravel - Caples	same
2017	None			
2018	Bass Pro Shop	14,736	Asphalt & Gravel - XP	64,057
	NWSA	7,783	Gravel - XP	same
	NWSA	6,199	Sawyer Equip & Miles	55,832
	NWSA	7,829	Packer Equip & Miles	46,916
2019	None			
2020	NWSA	4,595	Packer Miles	24,591
	NWSA	10,384	Packer Miles	88,716
	TOTALS	\$92,660		\$409,858

### BOTH BCHC AND BCHA HAVE GRANTS FUNDS AVAILABLE

Contact Lucy Badenhoop at [badenhoop@comcast.net](mailto:badenhoop@comcast.net) for a copy of "GRANT WRITING – Basics for Beginners."

## MID VALLEY UNIT:



### YOUNG ADULT PACK TRIP

By Cathy Dollarhide

July 24 and 25, 2021 marked Mid Valley Unit's first young adult pack trip. After filling out a grant application, and explaining what the money would be used for, BCHA awarded the unit some funding for our plan. Most of the kids that trained hard for Bishop Mule Days Intercollegiate Packing Competitions had never been on a pack trip, so these were the young adults we targeted. Five of the eight young adults could make the set date, so we made our plans and went for it!

We are thankful to Carl and Julie Perry for providing four pack stock and a riding mule. Doug and I provided two pack stock. The kids showed up at Gianelli Trailhead at 6 a.m., the morning of the July 24, to help pack the six mules with all the supplies for 10 people for one night. This took a couple of hours but what a great opportunity to really learn to pack! This was not a competition, as in Bishop, this was for their provision and comfort in the backcountry where there is no handy 7-11 if you forget something.

Aspen Meadows Pack Station showed up with five riding stock for the kids and we all left for Upper Relief around 8:30 a.m. The rest of the trip was amazing. We had a great ride in, a great camp spot, great fishing, rafting in the lake, great food, and even greater fun and camaraderie. Everyone got a decent night's sleep and was up early the next morning to fish and eat breakfast. Another couple hours' packing the stock again and then the riding out stock arrived from the pack station. Unfortunately, we only had one night to spend, and it was time to head back to reality.

The kids were able to experience the beauty of the backcountry where few can visit. They realize that packing is a lot of work but well worth it. They also found out that it would be worth staying longer in the backcountry if they can experience a next time. We will definitely try to do this again in the future!

# UNIT NEWS



## SAN DIEGO UNIT:

### A YEAR OF SERVICE

By Theresia Jorgensen

As 2021 ends and we look back at the year, it was certainly one of changes. One thing that did not change with the San Diego Unit of Backcountry Horsemen of California was our commitment to the mission of the BHC organization. We completed the extensive renovation of the ramada at Los Vaqueros Group Horse Camp in Cuyamaca Ranch State Park. The ramada was built in the camp in 1950s and has been the central gathering place for those camping at Los Vaqueros for many years. The project extended over two weekends and several individual days. The ramada received a new roof, siding and trim, excavation of the dirt floor and placement of gravel, additional contouring around the ramada for water drainage and the addition of solar lights inside the ramada. This was in addition to the usual camp maintenance of grass cutting, corral maintenance and trail work. It was quite a project. The ramada is now in great structural condition and will be enjoyed by equestrians for many more years to come.

Our second annual service weekend is in the fall at Vern Whitaker Horse camp in Anza Borrego State Park. The park is named for Spanish explorer, Juan Batista de Anza, who first traveled from Mexico to California via the desert area. The Spanish word "Borrego" means big horn sheep (which live in the park).

The Vern Whitaker Horse Camp was initially developed by Vern Whitaker, a seasonal park ranger, who spent winters in the desert and summers in Cuyamaca Rancho State Park. Equestrians have been enjoying the camp and great desert riding for 50 years.

After extensive work done in 2020, this year we focused on the ramada and individual camps sites. The ramada received a good cleaning and installation of solar lights while the individual camp sites received new ADA-style fire rings with grills. Additional tree trimming and general clean up were completed. We held the first Vern Whitaker Festival two weeks later. It was a huge success in many ways. We had 28 horse trailers in camp, including several very large living quarters trailers. We realized that this camp is the only one in our southern California area that can accommodate that many large rigs. They all fit nicely and parking was easy. Everyone had great rides during the day and fun, social evenings around the group campfire in the evenings. Saturday was a catered Dutch oven dinner prepared by Bill and Marcia Moser of Santa Ana River Unit followed by entertainment by Dave Stamey. Campers came from as far away as north of Sacramento and others from only a few miles away. Many friendships were renewed and a good time was had by all.

While we could not have predicted or had any control over many things that occurred in 2021, we focused on what we could accomplish. Camp work was done with the required face mask and the usual potluck dinners were put on hold. We could safely gather outside, however, with everyone bringing their camp chairs and keeping the 6-foot distance from others not in their "bubble" of acquaintances. We are looking forward to another great year and making a difference.



# UNIT NEWS

## MID VALLEY UNIT:

### COLUMBIA ALL-EQUESTRIAN CHRISTMAS PARADE

Article and photos by Kathy Zumbrunn

For as long as we can remember, Columbia Historic State Park has held an All-Equestrian Christmas Parade. It is a fun event and a big draw to the community of Columbia. It is also a toy drive for disadvantaged children in the area. Originally founded by the Shady Ladies in the 1990s, Mid Valley Unit took over sponsorship of the parade approximately 15 years ago. We “took the reins” and ran with it! This is a big commitment and a group effort, but it has been a successful venture and brought all of us together to put on the best parade each year. Horsemen, women and children come from near and far to ride in this small but grand affair. The parade is scheduled for the second Sunday of December and is held regardless of the weather. We have endured rain, snow, wind and awesome sunny days. Only once did we have to cancel due to icy streets, which made it much too dangerous and unsafe for riders and spectators alike.

As much as we have all enjoyed sponsoring this grand event, it is now time for us to pass the responsibility on to someone else. I know we will be there to guide the next group who takes on this wonderful parade.

This year the forecast was rain or snow, it was cloudy and in the 40’s, but the parade was scheduled for “rain or shine” and so we were all there and preparing for the final Backcountry Horsemen-sponsored All-Equestrian Parade. We prayed the weather would hold until the parade was over, and our prayers were answered. The first raindrop hit my hand at 1:40 p.m. as I sat and signed my lunch check at El Jardin’s! Perfect! Everyone was packed up and headed home by now. The parade was over, and all went well!

Yes, the parade was great. We had 15 entries and all the horses were perfectly mannered little equines! Santa rode in a beautiful white carriage pulled by two gorgeous Percheron horses and greeted the children with candy and big smiles. The crowd cheered and waved as all the entrants pranced by, not once, but twice! Everyone had a wonderful time.

I’d like to thank all the Mid Valley Unit members who either came to help, ride in the parade or stand along the boardwalk and cheer on the riders! Alice Lawellin was our parade judge once again.

And big congratulations to Shady Ladies (Susie Perry and Cheryl Butler) who were awarded the trophy for overall winner! Their 19<sup>th</sup> century gowns were gorgeous!



Santa rode in a beautiful white carriage pulled by two gorgeous Percherons



Mid Valley member and Columbia resident, Terri Arington



Shady Ladies' Susie Perry and Cheryl Butler were Overall Winner



# UNIT NEWS

## EASTERN SIERRA UNIT:



### FREE PACK CLINICS

By Mariah Keuler

The BCHC Eastern Sierra Unit is proud to offer free packing lessons for anyone wanting to attend, every Sunday at the Tri-County Fairgrounds in Bishop, California.

Bishop is home to the greatest mule show in the world – Bishop Mule Days Celebration – held every Memorial Day Weekend and is the heart of packing country in the Eastern Sierra. Members of the community are encouraged to attend to learn more about the Backcountry Horsemen and the art of packing. Skilled veterans in the industry provide education and offer hands-on experience to anyone in attendance. Kids and adults learn how to tie knots, build loads and throw hitches. Each Sunday lesson build on the previous week's instruction but offers the opportunity for anyone to step in for the first time and learn about packing.

BCHC members hosting these lessons hope to encourage the next generation to get involved with packing and the Backcountry Horsemen. It is widely recognized that without the support of our communities and the youngsters in them, the art of packing and the ease of backcountry access that this organization provides will be no more. In order to keep the backcountry alive and thriving, education and outreach are vital – we need to make teaching the next generation these skills a priority.

The key to success in all of our efforts lies with youth. As the Eastern Sierra Unit's Education Chairperson, Anna Baglione, says, "Planting the seed when a child is young is important because they are still trying to figure out what they do and don't like. Having kids try as many different things as they can is a recipe for success for their future."

As our world shifts its priorities, we need to make sure our backcountry stays one of the top priorities. By engaging with our youth and doing what is necessary to plant the seeds and teach the skills, we are passing the torch on to the ones who can keep it all going.



## HIGH COUNTRY UNIT:

### COMMUNITY TRAILS WORKSHOP

By Cindy McMurry (with some information from a Modoc National Forest article)

The Modoc National Forest held a two-day community trails workshop, October 29-30, in collaboration with local partners such as the Backcountry Horseman of California High Country Unit, Modoc County Natural Resources, Modoc County Farm Bureau, UC Cooperative Extension, the California Mountain Biking Coalition, International Mountain Bicycling Association (IMBA) Trail Solutions, as well as USDA Forest Service trails and recreation specialists. Participants spent the morning of the first day in the classroom, meeting new friends and learning the elements of a well-designed, multi-use, sustainable trail. They spent the first afternoon and all of the second day in the field practicing the techniques they learned in the classroom. Chris Orr, a representative of IMBA Trail Solutions, led the workshop. Specifically, IMBA strives to conserve and sustain trails and wild places, as well as to build and maintain safe multi-use trails for public use both locally and as a destination for visitors in the future.

Workshop activities included on-site trail evaluations and classroom instruction in addition to hands-on trail repair work at Howard's Gulch Trail in the Modoc National Forest. Participants learned sustainable practices and were instructed on drainage construction techniques. Having a diverse group of horseback riders, hikers and mountain bikers at the workshop was beneficial in providing multiple perspectives and in providing more information about how to manage "multi-use trails."

Aside from the South Warner Wilderness, most trails on the Modoc National Forest are open to equestrians, hikers, and bicyclists. Sustainable development also involves welcoming and collaborating with various user groups on how trails are built and maintained, including how features can accommodate a variety of users. Local knowledge and industry also play a role. For example, many visitors from out of the area may be surprised to see cattle on National Forest trails. Setting the right expectations and always remembering how local agriculture and industry fit in is critical for Modoc. Greg Nejmanowski, Recreation Lead for the Modoc Forest East Zone, shared, "The opportunity to maintain, improve, and/or expand our multi-use trails across the Modoc NF is an opportunity to stimulate an awareness in the importance of our public lands. It's an opportunity to ignite a passion in youth that could last them a lifetime, and an opportunity to build community around a recreational resource, a resource that has a forgiving spirit and an unparalleled ability to let us rise above our differences. High Country Unit member and workshop participant, Alan Cain, says he now "looks at trails with a whole new perspective."



# BCHA: Dedicated to keeping America's trails open for all



**BCHC sincerely thanks the following 2021 Rendezvous sponsors for their generous support:**

*Star Milling Co.*

www.starmilling.com  
1.800.733.6455

*Integrity*



**National Director  
Randy Hackbarth**

## BCHA TIDBITS

By Randy Hackbarth, National Director

□ As a member of BCHA you are eligible to receive **EQUISURE INSURANCE**. BCHC members that use the Equisure Equine Insurance need to re-up every January 1, to continue coverage. The annual premium for \$1M coverage is \$20 for an Individual or \$40 for a Family.

□ **BCHA NATIONAL BOARD MEETING** - April 9-13, 2022 at Embassy Suites, Airport, Kansas City, MO

□ BCHA now has a **MEMORANDUM OF UNDERSTANDING (MOU)** between the BCHA and the USDA, Forest Service Recreation, Heritage and Volunteer Resources, signed at the end of 2021. Some states are working at having an MOU or Volunteer Service Agreements (VSA's) for their Regions rather than at the district level. This national MOU might be helpful for pursuing local VSA's at Forest level vs district offices.

□ BCHA is always looking for members to **JOIN COMMITTEES**. If you have an interest, here are some committees and contacts:

- Public Lands - Brad Pollman (publiclands@bcha.org)
- Fundraising - Latifia Rodriguez (fundraising@bcha.org)
- Education - Craig Allen (education@bcha.org)
- Media & Marketing/Facebook - Brian Pierick (brian.pierick@bcha.org)
- Chapter Support Grants - Robert Wagner (foundation@bcha.org)
- Membership - Dennis Serpa (membership@bcha.org)
- Volunteer Hours - John Chepulis (volunteer@bcha.org)
- Expansion - Freddy Dunn (expansion@bcha.org)
- Youth Committee- Greg Schatz (gregschatzbuilder@gmail.com)
- Partnerships Committee - Darrell Wallace (publicLiaison@bcha.org)

\$1,000 donation made by Mid Valley Unit member Terri Arington in memory of her late husband Ron ("RA") Arington. Ron was a longtime Ag teacher at Sonora High School. He was passionate about the back country, his horses and mules, his students and his wife.

*"If you're lucky enough to be in the mountains, you're lucky enough."*



**ELK GROVE MILLING, INC.**

*The Horse Feed Specialists™*

Remember, BCHA only mails ONE print edition of its newspaper each year. To read the digital version of the Winter 2022 edition, go to bcha.org, click on "Member Home" then "News" then "Newsletter."

# IN MEMORY

The following members of Backcountry Horsemen of California are no longer with us but are not forgotten. We sincerely thank them for the support they gave BCHC through their years of participation in unit events, trailwork, Rendezvous and other activities. Rest in peace.



## ALVIN BAPTISTA, MID VALLEY UNIT

1930 – 2021

Mid Valley Unit member Alvin Baptista passed away September 26. Alvin was born and raised on his family's dairy and lived on that ranch his entire life. While in school he showed cattle in 4H. In 1951, he was drafted into the Army and served two years in Korea. Upon returning home he attended Modesto Junior College where he majored in agriculture while working as a full-time rancher raising turkeys and annual crops. Alvin worked for International Paper for 26 years while he continued to farm and ranch; and, in keeping with the work ethic of his generation, after he left International Paper, he began a 12-year career with Turlock Recycling. Alvin began his love affair with mules in 1977. He first started driving mules in the chariot races at Bishop Mule Days and then went on to coon jumping and riding his mules in many events like cattle sorting and cutting. As a member of the American Mule Association and Backcountry Horsemen, he competed in many mule shows in California, Arizona and Nevada. His mule teams won multiple world championships and sein 1990 from Casper to Cody, Wyoming, to celebrate the Centennial of the Wagon Train. Alvin and two other Mid Valley Unit members put together the Unit Pack Team to compete in the Bishop Mule Days events. He also introduced the "coon jumping" competition at the Stanislaus County Fair. In 1994, Alvin married for the third time. He and Patricia shared common interests, traveled and had a happy life in their country home on the Baptista ranch. Pat passed in 2010. A Celebration of Life was held in October at Turlock Funeral Home and internment the following day at San Joaquin Valley National Cemetery, Santa Nella. Alvin Baptista was a good friend to most of us, and usually had a friendly smile and tales to tell! He will be missed.

In tribute to a Backcountry Horsemen of California member who has died, we welcome units to submit a brief obituary/story and photograph for publication in The Backcountry News. Please send submissions by email to [BCHCNewsletter@gmail.com](mailto:BCHCNewsletter@gmail.com)

In addition, the BCHC Member site ([bchcalifornia.org](http://bchcalifornia.org)) contains an "In Memory" tab. This is another place where a photo and obituary of longtime members may be placed. To share stories and pictures, email to BCHC Webmaster Jacque Murphy at [brennalu@hotmail.com](mailto:brennalu@hotmail.com)

## GOOEY CARAMEL CINNAMON ROLLS

(From San Joaquin Sierra Unit's "Hoof Prints" newsletter, January 2022)

Waking up on a crisp morning, inside your warm and cozy tent is a moment I treasure every camping trip. The only thing that can make that moment better is the thought of warm, gooey, scrumptious caramel cinnamon rolls, just a quick 30-minute cook time away from my mouth.

### INGREDIENTS:

18 Cinnamon Rolls, from a tin, you will need multiple

½ cup brown sugar

1 teaspoon cinnamon

½ cup graham cracker crumbs

### TOPPING:

Frosting that comes with cinnamon rolls

½ cup caramel ice cream topping

### INSTRUCTIONS:

1. Cut each roll into 4 pieces and arrange in the bottom of a 14-inch Dutch oven lined with aluminum foil or sprayed with non-stick cooking spray
2. In a bowl, combine brown sugar, cinnamon, and cracker crumbs
3. Sprinkle evenly over cut rolls
4. Cover with lid and bake at 350°F for 25-30 minutes
5. For icing, combine frosting with caramel topping. Drizzle over cinnamon rolls while still warm.



# Recognition of Special Individuals

Benefactor funds are used in a variety of ways to support BCHC's Public Lands activities. Uses of Benefactor funds may include but are not limited to hiring consultants to perform in-depth reviews, financing special studies and reports, and reducing out-of-pocket travel expenses for those who testify at state and federal hearings.

## SPECIAL MEMBERSHIPS,

9/26/2021 through 1/11/2022

### BENEFACTOR (\$100)

Eastern Sierra	Bill Carter Troy Patton
High Sierra	Ruth Gerson Nancy Hamill Jacob Hamstra Karl Pendegraft
Kern Sierra	Brad Allen of Rosedale Farrier Supply Mylon Filkins, DVM Larry Mumford
Los Padres	Kaye Bruns Robin Cederlof William Chaides Eve Devine Laura D. Wimer
Mid Valley	Rian Hudson Tony Alamo Karen Barindelli Jay Barnes Gary A. Cain Bob Cooper Carol Jo Hargreaves Debra Lewis Bob Magee John V. Marshall Jennifer Marshall MID VALLEY UNIT Randy Powell John Schaapman
Mother Lode	Donna Jones Furlow Jaede Miloslavich Stephanie Williams
North Bay	Lynn Cominsky
Redshank Riders	Renee Aberle Ron Robertson
Redwood	Darrel & Carole Polasek

San Diego	David Roy Chevallier Lee Kelly-Gillen Walt J. Kirkwood
San Joaquin Sierra	John Cunningham Larry Nishma, Knapp-Yosemite Trls Pk Sta Stephen Naylon
Sequoia	Jamie Wilson, DVM Larry Young
Shasta Trinity	Lyle Charter Ken Hartman Lori Henderson
Sutter Buttes	Corky Layne Jerry Walters

### PATRON (\$250)

High Country	Lynn Saunders
High Sierra	Richard Cochran Trish Pendegraft Sonia Shepard McLellan
Kern Sierra	Robert L. Anderson Willi Coeler Lynn Joiner
Los Padres	Otis Calef
Sequoia	Kathryn C. Bennett Jim Holly
Shasta Trinity	Bruce McGowan

### MT. WHITNEY (\$500)

Eastern Sierra	Sarah C. Sheehan
Kern Sierra	Roger Whitaker
Los Padres	Lisa Shinn
Mid Valley	Dennis M. Serpa Terri Arington Lloyd Erlandson
Pacific Crest	Craig Bugajski
Redshank Riders	Allison Renck
Shasta Trinity	Dean Angelides

**DID YOU KNOW?** The annual BCHC Rendezvous is a primary fundraiser for our organization. It helps pay for day-to-day operational expenses such as production and distribution of this newsletter.



# WELCOME, NEW MEMBERS!

**We look forward to meeting you!**

**The following new members joined BCHC from  
9/26/2021 through 1/11/2022**

Eastern Sierra	Vince Curtis Mariah Keuler Mark Midgett
Kern Sierra	Tyrin & Suzanne Prince
Los Padres	Susan Bettencourt Tinam & Ken Rizzo Lisa Shinn Teresa Taylor
Mid Valley	Alyssia Benavidez Debbie Binning Crystal Dalby Garrett Dollarhide Kristen & Hope Forrest-Guzman Roy Jones Michelle & Steve Kafka Jenna Ling Sandra Mangrum Anne Niederwemmer Jeff & Talena Perry Cindy & Jeff Salaun Carolyn Sizemore Allison Souza Holly Thompson
Mother Lode	Heidi Hook & Mike Luster
Redshank Riders	Jackie & Ramiro Graña Arely Melendez Keith Wheeler & Lillian Peters
Redwood	Angel Henry Erin & Josh Zulliger
San Diego	Jodi & Davis Staci Greene & Brad Baillie Barbara Kinder Kurt Ramey
San Joaquin Sierra	Madison Doty Laura Tracy Knapper & Randy January Shelly McCarthy Sherry Smiley
Santa Ana River	Glenda Bayly Sarah Burnett & Mark Smith
Shasta Trinity	Keith & Cortney Elam

## WHY JOIN BACKCOUNTRY HORSEMEN OF CALIFORNIA?

(From bchcalifornia.org)

As a member, you'll:

Get to participate in state and unit activities

Learn valuable backcountry skills and outdoor ethics

Gain new friends in our wonderful members

Receive the BCHC newsletter

Be kept up to date on public lands issues

And more!

Even if you don't ride or aren't an active member, your dues contribute to our cause! You'll be helping pay for work projects, educational materials, training and insurances. Help support our efforts to keep trails open to equestrians!

## JOIN OR RENEW ONLINE

1. Fill out the ONLINE MEMBERSHIP FORM, save it and print a copy for your records.
2. Submit the online form. A copy will be sent to Chip Herzig, VP of Membership. IMPORTANT: Youth Memberships MUST also print, sign, and mail these forms. Youth memberships will NOT be valid until the forms are received.
3. Pay with your Paypal

## JOIN OR RENEW BY MAIL

1. Fill out the MEMBERSHIP FORM on page 23, make a copy for your records. IMPORTANT: Youth Memberships MUST also print, sign, and mail these forms. Youth memberships will NOT be valid until the forms are received.
2. Mail the completed form(s) and check\* to:

Chip Herzig  
BCHC Membership  
1280 State Rte 208  
Yerington, NV 89447

\*Please make checks payable to Backcountry Horsemen of California. You may also pay via Paypal.

# BCHC Units Around the State

## ANTELOPE VALLEY

PO Box 84  
Pearblossom, CA 93553  
**Marcy Watton**  
(661) 878-1791  
HorsingRound@aol.com

## EASTERN SIERRA

PO Box 157  
Olancho, CA 93549  
**Troy Patton**  
(760) 764-2850  
outdoortroy46@gmail.com

## HIGH COUNTRY

PO Box 161  
Milford, CA 96121  
**Cindy McMurry**  
(530) 640-0429  
mcmurrycindy@gmail.com

## HIGH SIERRA

P. O. Box 6632  
Exeter, CA 93221  
www.highsierraunit.org  
**Dan Baumgardner**  
(559) 334-7731  
danbdrafthorse@yahoo.com

## KERN RIVER VALLEY

PO Box 2179  
Lake Isabella, CA 93240  
4HRanch@earthlink.net  
**Steve Horst**  
(661) 867-2777  
horststephenc@yahoo.com

## KERN SIERRA

16347 Stephenie Rd  
Bakersfield, CA 93314-9669  
**Robert Anderson**  
(661) 978-9630  
lazya01@yahoo.com

## LAKE-MENDO

6980 Potter Valley Rd  
Ukiah, CA 95482  
**Traci Glentzer**  
(707) 972-6256  
blackhorsetack10@gmail.com

## LOS PADRES

Box 472  
Atascadero CA 93422  
www.bchc-lpunit.org  
**Ryan Turner**  
(805) 286-0850  
rt91.ltec@gmail.com

## MID VALLEY

PO Box 1709  
Modesto, CA 95353  
www.bchcmidvalley.org  
**Doug Dollarhide**  
(209) 605-2403  
bootsandspur@att.net

## MOTHER LODE

PO Box 702  
North Highlands, CA 95660  
**Randy Hackbarth**  
(530) 626-0571  
trlryder@pacbell.net

## NORTH BAY

PO Box 9435  
Santa Rosa Ca. 95405  
www.northbayunit.com  
**Dan Horn**  
(707) 544-4543  
bearstrap@msn.com

## PACIFIC CREST

PO Box 720684  
Pinon Hills, CA 92372  
**Jennifer Sponsler**  
(760) 868-1588  
jnjspon@aol.com

## REDSHANK RIDERS

PO Box 383  
Aguanga, CA 92536-0383  
www.redshankriders.com  
**Mike Lewis**  
(951) 760-9255  
mike@stumblinranch.com

## REDWOOD

PO Box 6023  
Eureka, CA 95502-6023  
www.redwoodunit.com  
**Carole Polasek**  
(707) 786-9637cell: (707) 599-8021  
muleride15@gmail.com

## SAN DIEGO

PO Box 833  
Descanso, CA 91916.  
www.bchcsd.com  
**Terry Jorgenson**  
(760) 802-1420  
tlh9749@yahoo.com

## SAN JOAQUIN SIERRA

PO Box 25693  
Fresno, CA 93729-5693  
www.bchcsjsu.org.  
**Joe Kaminski**  
(559) 733-9170  
kaminski clan@gmail.com

## SANTA ANA RIVER

PO Box 306  
Norco, CA 92860  
www.sarubchc.org  
**Mike Williams**  
(951) 340-1789  
socialhorsemn@yahoo.com

## SEQUOIA

PO Box 456  
Springville, CA 93265-0579  
www.bchc-sequoia.org  
**Gail Inman**  
(559) 539-2260  
president@bchc-sequoia.org

## SHASTA TRINITY

16900 C Rd  
Cottonwood, CA 96022  
www.bchcshastatrinity.org  
**Greg Mittelstadt**  
(707) 330-3314  
donar\_723@yahoo.com

## SIERRA FREEPACKERS

PO Box 64  
Oakhurst, CA 93644-0064  
www.sierrafreepackers.com  
**Patricia Vallentyne**  
(559) 683-8099  
pcvallentyne@gmail.com

## SUTTER BUTTES

2568 Lake Hills Dr  
Butte Valley, CA 95965  
**Gary Paul**  
(530) 693-0420  
muleguy54@gmail.com

## TOP OF THE STATE

PO Box 461  
Etna, CA 96027-0461  
www.bchc-tos.com  
**Michele Machado**  
(817) 308-0258  
meechele418@gmail.com

## Questions? Membership Matters

BCHC VP of Membership is  
Chip Herzig.

He will be happy to address  
your questions or concerns.

Chip may be reached  
Monday through Friday.

By mail: BCHC Membership  
1280 State Rt 208  
Yerington, NV 89447

Email: [chipherzig@gmail.com](mailto:chipherzig@gmail.com)

Phone: (775) 463-3634

## Planning a Trip? Use



You will find the same airlines, hotels, rental cars  
and cruises as on other travel websites!

You'll get great travel prices!

Each time you book travel a portion of the travel  
commissions will go to support BCHC!

**BCHC EARNS 60%**

**OF THE  
COMMISSIONS!**

*It's that simple!*

[www.ytbtravel.com/bchc](http://www.ytbtravel.com/bchc)

**REMEMBER**

Send your membership renewals to VP of  
Membership Chip Herzig. **DO NOT SEND  
THEM TO BCHA.** Sending to the wrong place  
will delay payment and cause your membership to  
show as expired so you cannot participate in unit events.

# MEMBERSHIP

**Backcountry Horsemen  
of California**



**MAIL TO: BCHC  
MEMBERSHIP  
1280 State Rt. 208  
Yerington, NV 89447**

**MEMBERSHIP  
APPLICATION**

New     Renewal  
 Change

**PARENT UNIT AFFILIATION: (Select and CHECK a Unit as your Affiliation)**

- |  |  |   |   |
|--|--|---|---|
| <input type="checkbox"/> Antelope Valley   | <input type="checkbox"/> Lake-Mendo    | <input type="checkbox"/> Redshank Riders    | <input type="checkbox"/> Shasta Trinity     |
| <input type="checkbox"/> Eastern Sierra    | <input type="checkbox"/> Los Padres    | <input type="checkbox"/> Redwood            | <input type="checkbox"/> Sierra Freepackers |
| <input type="checkbox"/> High Country      | <input type="checkbox"/> Mid Valley    | <input type="checkbox"/> San Diego          | <input type="checkbox"/> Sutter Buttes      |
| <input type="checkbox"/> High Sierra       | <input type="checkbox"/> Motherlode    | <input type="checkbox"/> San Joaquin Sierra | <input type="checkbox"/> Top of the State   |
| <input type="checkbox"/> Kern River Valley | <input type="checkbox"/> North Bay     | <input type="checkbox"/> Santa Ana River    |   |
| <input type="checkbox"/> Kern Sierra       | <input type="checkbox"/> Pacific Crest | <input type="checkbox"/> Sequoia            |   |

DCTR (Your Membership Number): \_\_\_\_\_

MEMBER'S NAME - No Business Names, Print Clearly      SPOUSE/CO-MEMBER'S NAME - MUST SHARE SAME ADDRESS

Street Address/PO Box \_\_\_\_\_

City \_\_\_\_\_ State \_\_\_\_\_ Zip Code (full 9 digits if known) \_\_\_\_\_ Area Code \_\_\_\_\_ Phone Number \_\_\_\_\_

Email Address: \_\_\_\_\_

Donation to BCHC Education Fund (Tax deductible) \$ \_\_\_\_\_

Total Enclosed: \$ \_\_\_\_\_ Check No. \_\_\_\_\_

**Parent Unit Membership Types (Check One)**

- |  |  |   |  |
|--|--|---|--|
| <input type="checkbox"/> 1 Year Individual \$50  | <input type="checkbox"/> 1 Year Family \$60  | <input type="checkbox"/> Young Adult (18-25 years old) \$15                 | <input type="checkbox"/> Benefactor \$100  |
| <input type="checkbox"/> 2 Year Individual \$90  | <input type="checkbox"/> 2 Year Family \$110 | <input type="checkbox"/> Youth (12-17 years old) \$15*                      | <input type="checkbox"/> Patron \$250      |
| <input type="checkbox"/> 3 Year Individual \$125 | <input type="checkbox"/> 3 Year Family \$150 | *Youth members MUST fill out BOTH Youth Membership forms (available online) |  |
|  |  |   | <input type="checkbox"/> Mt. Whitney \$500 |

**Associate Memberships: An Additional \$15 PER UNIT is added to your Parent Unit Dues**  
Associate Memberships Unit Affiliations MAY NOT BE FOR THE SAME UNIT AS YOUR PARENT UNIT

Associate Membership for: \_\_\_\_\_ \$15/Unit  
Unit Name (from above list)

Associate Membership for: \_\_\_\_\_ \$15/Unit  
Unit Name (from above list)

\_\_\_\_\_  
Add additional choices here

**Please clip form along dashed line and keep the below portion for your records.**

**Parent BCHC Membership Types**

Individual, Family, (Shared\*\*), Benefactor, Patron, and Mt. Whitney

A Parent Membership is affiliated with a single Local Unit. BCHC Members may NOT hold more than ONE active Parent Membership.

\*\*A SHARED Membership if for two adults with differing last names who share a common address.

**Associate Memberships**

These special Memberships are only available to persons already holding Parent BCHC Membership. No one may sign up for an Associate Membership without 1) having registered one of the Parent Membership types, and 2) having selected Parent Unit affiliation.

**Youth Memberships**

Youth Memberships MUST be accompanied by a signed Youth Membership Permission Release and Youth Parent Permission Form. A Youth Membership is NOT valid until BCHC or the Parent Unit has received signed copies of these forms.

**Complete information regarding BCHC Membership is available on the MEMBERSHIP TAB at [bchcalifornia.org](http://bchcalifornia.org) or call (775) 463-3634**

**KEEP FOR YOUR RECORDS**

I submitted an Application Form for a new -

- |  |       |
|--|-------|
| <input type="checkbox"/> 1 Year Individual             | \$50  |
| <input type="checkbox"/> 2 Year Individual             | \$90  |
| <input type="checkbox"/> 3 Year Individual             | \$125 |
| <input type="checkbox"/> 1 Year Family                 | \$60  |
| <input type="checkbox"/> 2 Year Family                 | \$110 |
| <input type="checkbox"/> 3 Year Family                 | \$150 |
| <input type="checkbox"/> Young Adult (18-25 years old) | \$15  |
| <input type="checkbox"/> Youth (12-17 years old)       | \$15* |
| <input type="checkbox"/> Benefactor                    | \$100 |
| <input type="checkbox"/> Patron                        | \$250 |
| <input type="checkbox"/> Mt. Whitney                   | \$500 |

On that form, I also requested: \_\_\_\_\_ Associate Memberships \$ \_\_\_\_\_

My Total Remittance: \_\_\_\_\_ \$ \_\_\_\_\_

My Check Number: \_\_\_\_\_

Date Mailed: \_\_\_\_\_

**Verification of BCHC Membership**

Verification of BCHC Membership is available via:

- 1) BCHC Unit President's reports
- 2) BCHC Membership Chair reports
- 3) a self addressed stamped envelope submitted with this form
- 4) a valid email address

**DON'T FORGET: The BCHC Executive Committee will no longer send out membership renewal verification "green slips" via regular mail. Instead, each unit president and membership chair will get a personal email from the BCHC VP of Membership (Chip Herzig) with each units' data AND it will be put on the BCHC web page in the password protected section.**



# LEAVE NO TRACE

SEVEN  
Principles

1 Plan Ahead



and Prepare



2 Travel and  
Camp on  
Durable  
Surfaces



3



Dispose  
of Waste  
Properly



4

Leave  
what  
you find



5

Minimize,  
Campfire  
impact



6

Respect

7



Be  
Considerate  
of other visitors



Wildlife

# OUTDOOR ETHICS