

Welcome to the Burlington Motorcycle Trail System

The trail system has 50 miles of trails suitable for motorcycles and offers opportunities for everyone, from novices through expert riders. The trail system was developed through a partnership between the Nevada County



Woods Riders, State of California OHMVR Division and Tahoe National Forest.

Omega Overlook Trailhead and Chalk Bluff Staging Area provide convenient access to the majority of the trail system.

Chalk Bluff And Omega Overlook Trailheads/Staging Areas

The Chalk Bluff Staging Area is reached by traveling 1.6 miles east on Hwy 20 from the HWY 20 and HWY 49 intersection in Nevada City. The Omega Overlook Trailhead is reached by traveling 1.7 miles east from the HWY 20 and HWY 49 intersection in Nevada City.

The trailheads have access to toilets. There are no trash cans at Chalk Bluff Staging Area. The trailheads do not have potable water, so plan accordingly.

Burlington Motorcycle Trail System

LEGEND

For trail and road open/closed status in the Burlington OHV Area, please call the Yuba River Ranger District at 530-288-3231

- Motorcycle Trail (OPEN to MOTORCYCLES)
 - Off-Highway Vehicle (OHV) Trail (OPEN to ALL VEHICLES)
 - ===== Unmaintained Road (OPEN to ALL VEHICLES)
 - Highway
 - Paved Road
 - ==== Gravel Road
 - ==== Dirt Road
 - Foot or Horse Trail
- No OHV use except where indicated on map

Degree of Difficulty

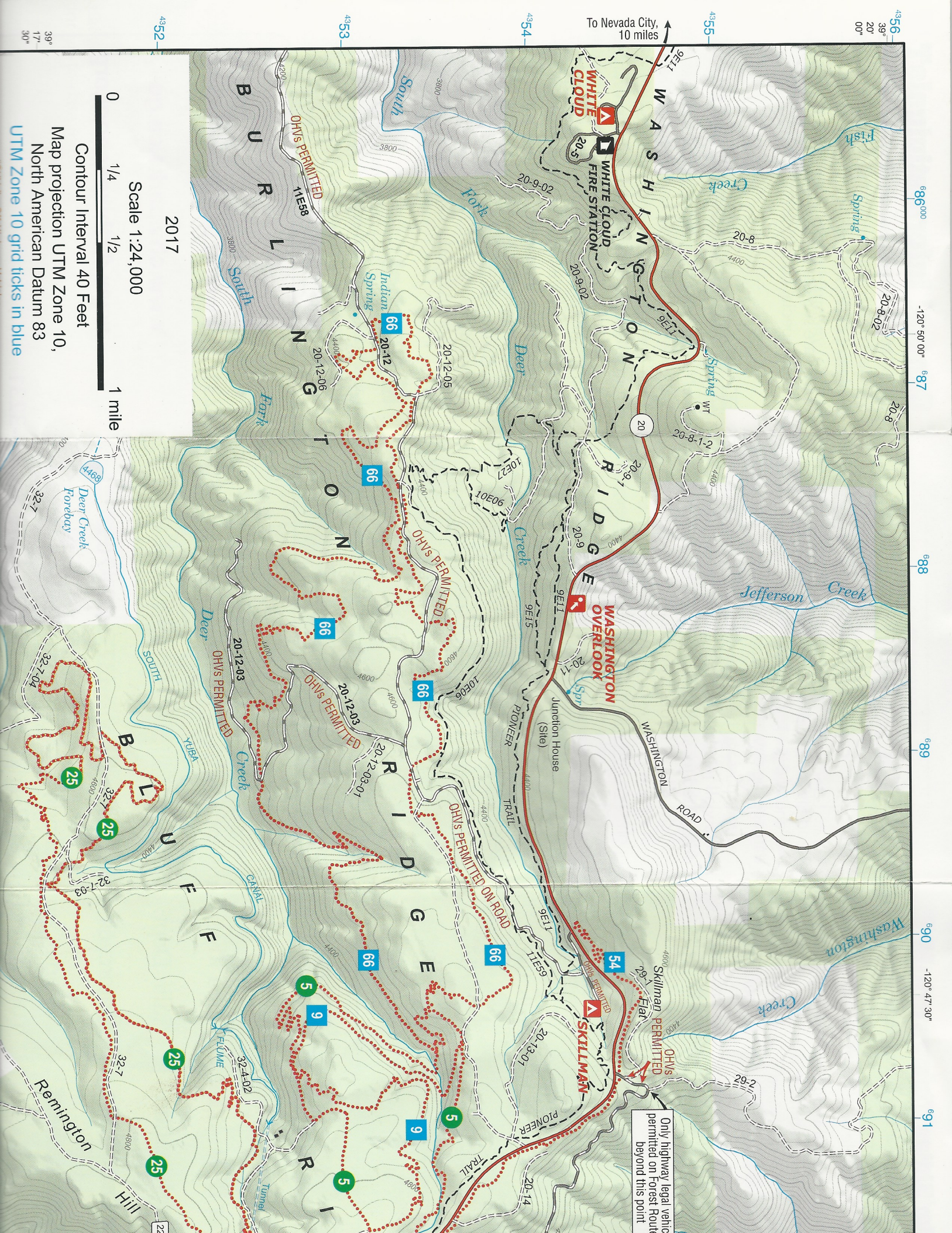
- 5 Beginner Trail & Trail Number
- 28 Intermediate Trail & Trail Number

- 20 State Highway Number
- 329 County Road Number
- 29 Forest Road Number
- OHV Staging Area
- Campground
- Trailhead
- Overlook
- Fire Station

Tahoe National Forest

Trail Descriptions

- 5 Omega (7.7 miles)
Omega Trail is accessed from Chalk Bluff Staging Area. The trail parallels HWY 20 and creates a loop opportunity back to the area. The trail ties into the Stanton and Towle Mill Loop trail is a tight, flowing woods riding experience with no side hill exposure.
- 9 Stanton (2.3 miles)
Stanton Trail is best accessed from the Omega or Towle Mill trails. The trail provides an inner loop to the trail system and the Towle Mill Loop and Omega trails. The trail is a tight, flowing woods riding experience with some side hill exposure.
- 16 Last Chance Tie (1.0 miles)
Last Chance Tie Trail is best accessed from the Last Chance Trail provides a longer loop that ties into the Last Chance trail is a tight, flowing woods riding experience that is a show.
- 25 Deer Creek (7.8 miles)
Deer Creek Trail is accessed from the Chalk Bluff Staging Area trail heads south from the staging area and creates a loop opportunity. The trail provides access to the Omega and Stanton trails. The trail is a tight, flowing woods riding experience that gives novice riders the opportunity to practice cornering. The trail has few spots with side hill exposure.
- 28 Excelsior (12.4 miles)
Excelsior Trail is accessed from the Chalk Bluff Staging Area trail heads east from the staging area and creates a loop opportunity. The trail provides access to the Last Chance Trail. The trail provides a flowing woods riding experience with some technical features and exposure to test rider's skills.
- 54 Omega Overlook (4.5 miles)
Omega Overlook Trail is accessed from the Skillman Campground or the Omega Overlook Trailhead. The trail parallels HWY 20 and provides access to the greater trail system at Upper Burlington Road. The trail is a tight, flowing woods riding experience with some technical features and exposure to test rider's skills.
- 55 Last Chance (4.0 miles)
Last Chance Trail is accessed from the Last Chance Mine Road. The trail provides a loop opportunity to the Omega and Stanton trails. The trail is a tight, flowing woods riding experience with some technical features and exposure to test rider's skills.
- 66 Towle Mill (9.6 miles)
Towle Mill Loop Trail is accessed from Burlington Ridge Road. The trail provides a loop opportunity to the Omega or Stanton trails. The trail is a tight, flowing woods riding experience with some technical features and exposure to test rider's skills.

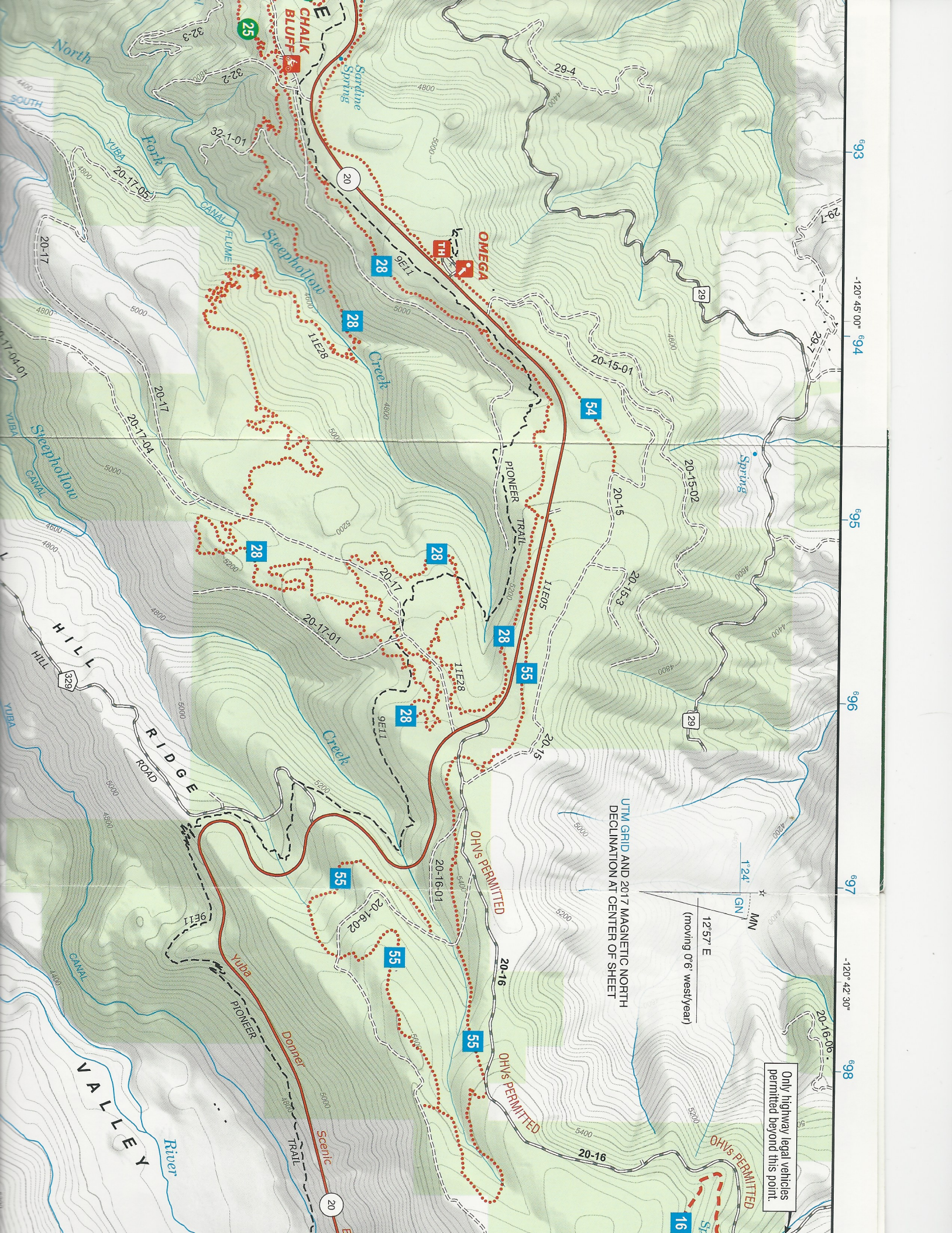


Only highway legal vehicle permitted on Forest Route beyond this point

2017
 Scale 1:24,000
 Contour Interval 40 Feet
 Map projection UTM Zone 10,
 North American Datum 83
 UTM Zone 10 grid ticks in blue

To Nevada City,
 10 miles

0 1/4 1/2 1 mile



993
-120° 45' 00"
994
995
996
997
-120° 42' 30"
998

UTM GRID AND 2017 MAGNETIC NORTH
DECLINATION AT CENTER OF SHEET



Only highway legal vehicles
permitted beyond this point.

OHVs PERMITTED

OHVs PERMITTED

OHVs PERMITTED